

Tilda®



Old Rose

Brave Tin Soldier Quilt



# Brave Tin Soldier Quilt

This charming quilt is based on the poignant Hans Christian Andersen story of a steadfast one-legged tin soldier, who falls in love with a pretty ballerina. There are just two blocks in the quilt but the various parts of each block require many pieces to build up the various motifs that play a part in the story. Close attention to the diagrams and careful measuring will help you make a quilt that is sure to be treasured for years.

## Materials

- Fabric 1: 4½yds (4.2m) – Solid blue sage (120008)
- Fabric 2: ⅛yd (15cm) (*not fat eighth*) – Solid warm sand (120002)
- Fabric 3: 7in (17.8cm) square – Solid dusty rose (120009)
- Fabric 4: ⅛yd (15cm) – Solid lupine (120013)
- Fabric 5: ⅜yd (40cm) – Lucy teal mist (100209)
- Fabric 6: ¼yd (25cm) – Sophie teal (130077)
- Fabric 7: ¼yd (25cm) – Tiny Dots light blue (130047)
- Fabric 8: ¼yd (25cm) – Biscotti Plaid teal (130065)
- Fabric 9: ⅛yd (15cm) – Mary teal (100207)
- Fabric 10: ¼yd (25cm) – Sophie pink (130080)
- Fabric 11: scrap (3in/7.6cm square) – Crisscross pink (130040)
- Fabric 12: ¼yd (25cm) – Lydia raspberry (100202)
- Fabric 13: ⅛yd (15cm) – Lucy red rose (100201)
- Fabric 14: ⅛yd (15cm) – Eliza raspberry (100204)
- Fabric 15: ¼yd (25cm) – Tiny Dots pink (130046)
- Fabric 16: ⅛yd (15cm) – Eliza grey (100210)
- Fabric 17: 8in (20.3cm) square – Waffle Plaid red (130069)
- Fabric 18: ⅛yd (15cm) – Lydia grey (100206)
- Fabric 19: ⅛yd (15cm) – Lydia blue (100213)
- Fabric 20: ⅛yd (15cm) – Macaron Plaid blue (130063)
- Fabric 21: ¼yd (25cm) – Mary blue (100214)
- Fabric 22: ⅛yd (15cm) – Eliza blue (100211)
- Fabric 23: ⅛yd (15cm) – Apple Cake Stripe red (130068)
- Fabric 24: ⅛yd (15cm) – Medium Dots red (130027)
- Fabric 25: ¼yd (25cm) – Pen Stripe grey (130033)
- Fabric 26: ½yd (50cm) – Dottie Dots grey (130045)
- Fabric 27: ⅜yd (40cm) – Tiny Star grey (130039)
- Backing fabric 4⅞yds (4.5m) – Lucy red rose (100201)
- Binding fabric ⅝yd (60cm) – Sophie teal (130077)
- Wadding (batting) 67in x 86in (170cm x 218.5cm)
- Piecing and quilting threads
- Quilter's ruler, rotary cutter and mat
- Removable fabric marker
- Thick card for cheek appliqué templates
- Black embroidery cotton (floss) for embroidering eyes

## Finished Size

59in x 78in (150cm x 198cm) after binding

## Fabric Note

Where a long eighth or long quarter of a yard is given in the Materials list you could use fat eighths and fat quarters instead (unless otherwise stated). A fat eighth is assumed to be approximately 10½in x 18in (26.7cm x 45.7cm) and a fat quarter approximately 21in x 18in (53.3cm x 45.7cm).

## Notes

- Fabric quantities given are based on a usable width of 42in (107cm).
- Measurements are in imperial inches with metric conversions in brackets – use only *one* system throughout (preferably inches).
- Press all fabrics before cutting.
- Use ¼in (6mm) seams unless otherwise instructed.
- Read all the instructions through before you start.

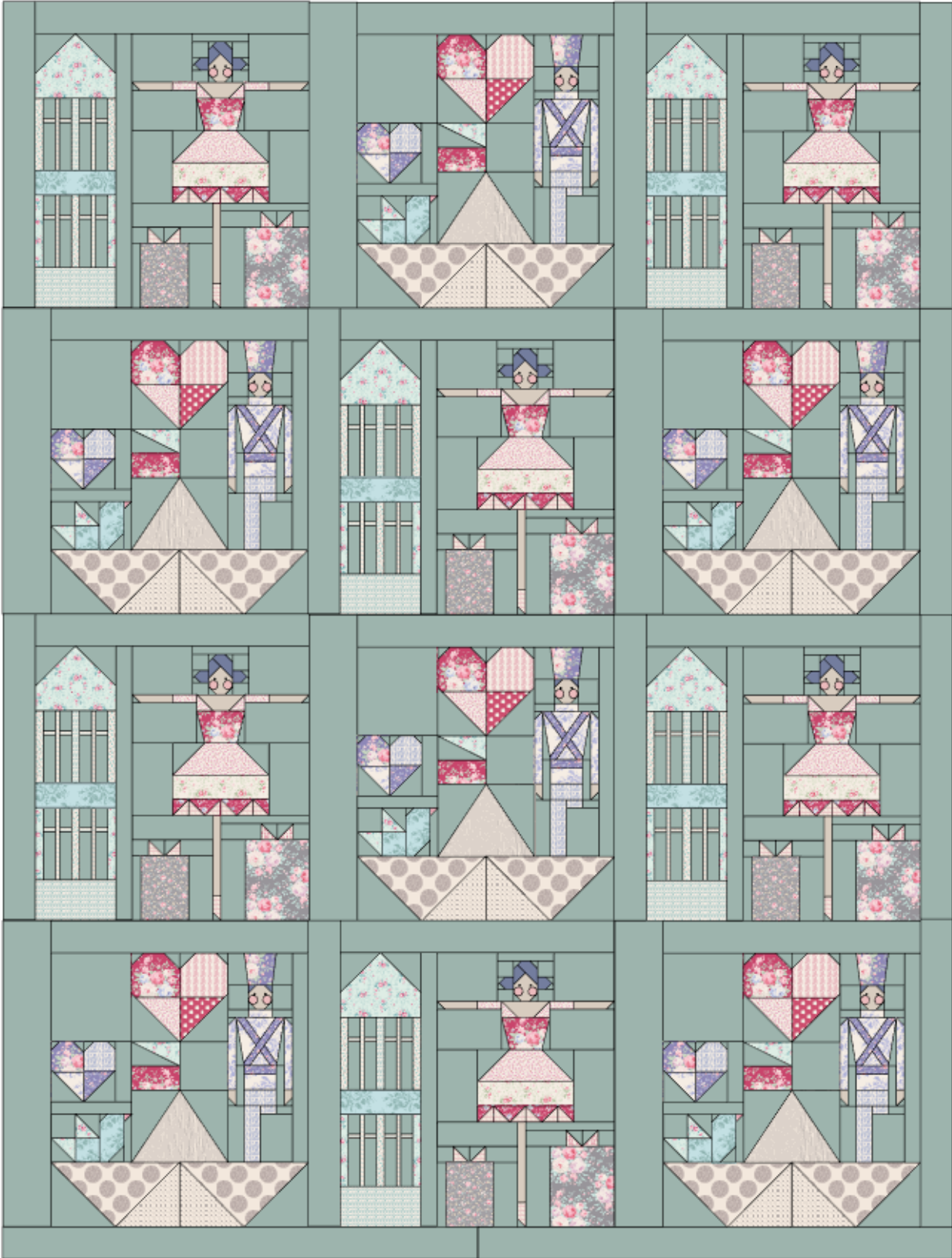
## Quilt Layout

1 The quilt is made up of two different blocks, a Ballerina block and a Soldier block. Six of each block are used in a 3 x 4 layout. Vertical sashing strips are added to the right-hand side of the quilt and two horizontal strips at the base. See **Fig A** for the fabrics used and **Fig B** for the quilt layout.

**Fig A** Fabric swatches



Fig B Quilt layout



## Cutting Out

**2** The Ballerina block and the Soldier block are made up of many pieces and need to be made and assembled in sections. **Fig C** shows the layout and the cut pieces needed for a Ballerina block (seam allowances are included in the measurements). **Fig D** shows the layout and the cut pieces needed for a Soldier block. You will probably find it easier to cut the pieces and make the blocks one at a time. Follow these diagrams *very* carefully when cutting the pieces and pay attention to each labelled section of the block. Use the correct fabrics for each part, following the fabrics shown in **Fig E** (ballerina) and **Fig F** (soldier).

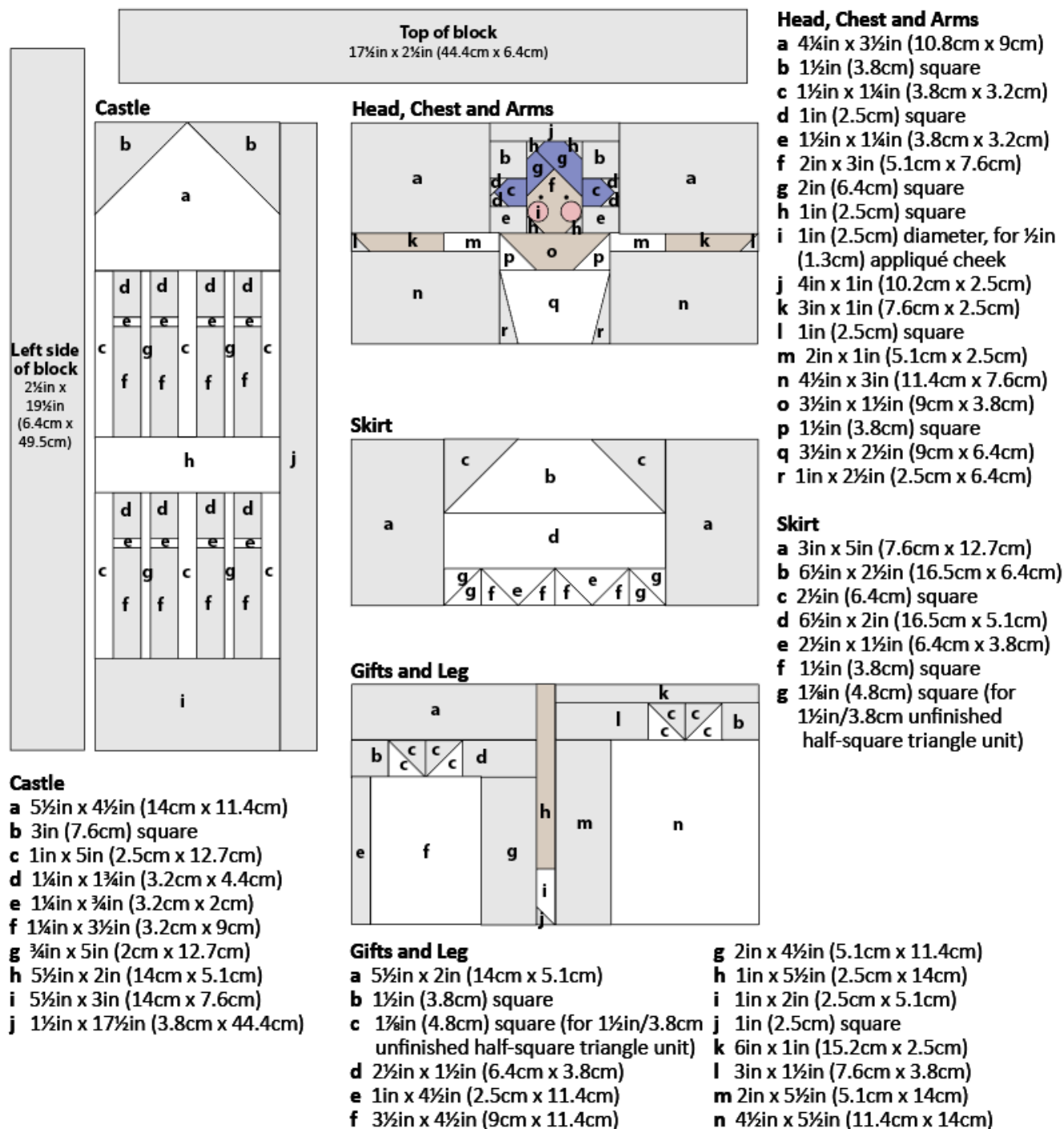
**3** From Fabric 1 for the vertical sashing, cut four strips 2½in x 19½in (6.4cm x 49.5cm). From Fabric 1 for the horizontal sashing, cut two strips 2½in x 30in (6.4cm x 76.2cm). Sew these two strips together into one long strip.

**4** Cut the backing fabric across the width into two pieces. Using a ¼in (6mm) seam, sew together along the long side and press the seam open. Trim to a piece about 67in x 86in (170cm x 218.5cm).

**5** Cut the binding fabric into eight strips 2½in (6.4cm) x width of fabric. Sew the strips together end to end and press seams open. Press the binding in half along the length, wrong sides together.

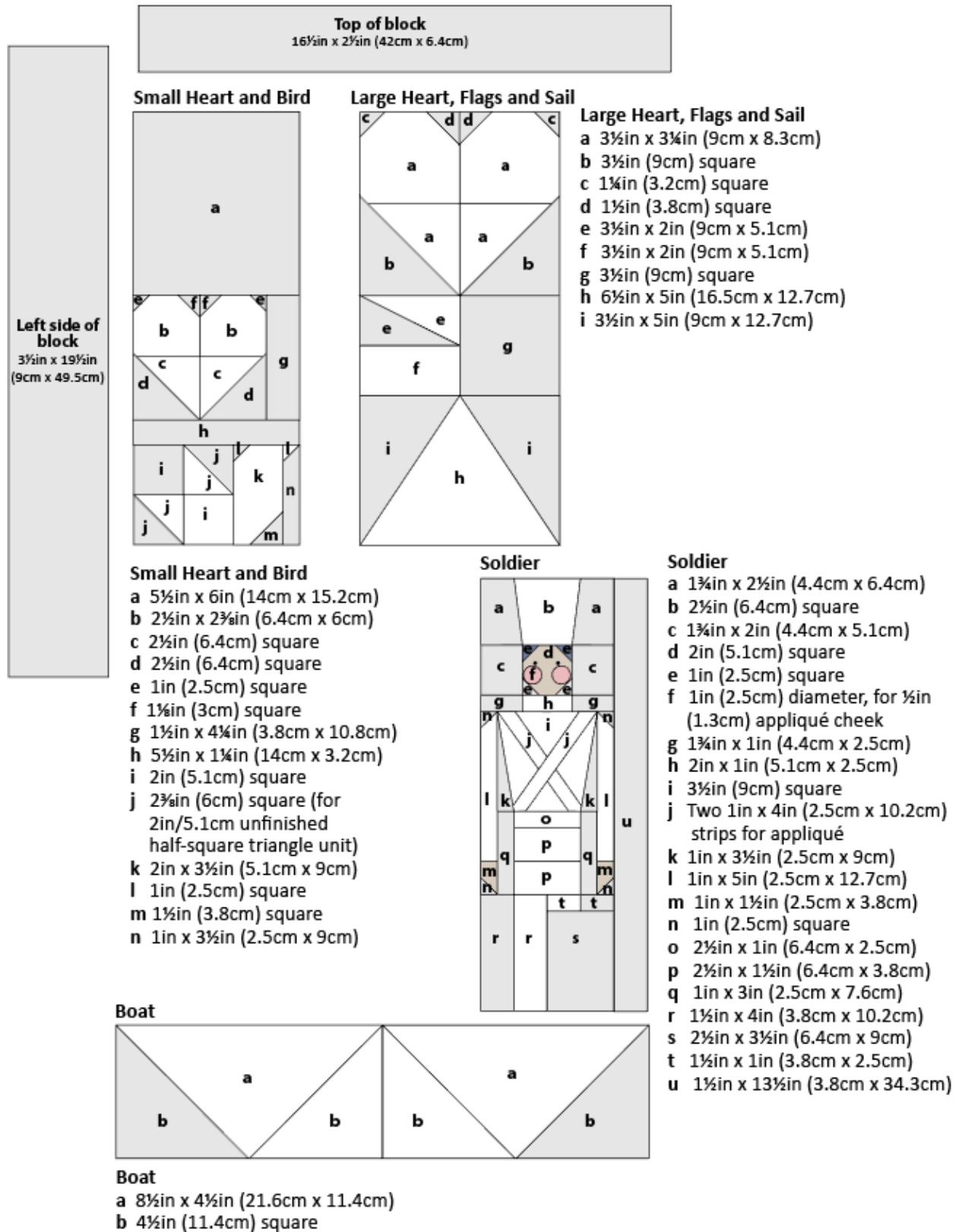
**Fig C** Layout and cutting for a Ballerina block

Sizes include seam allowances

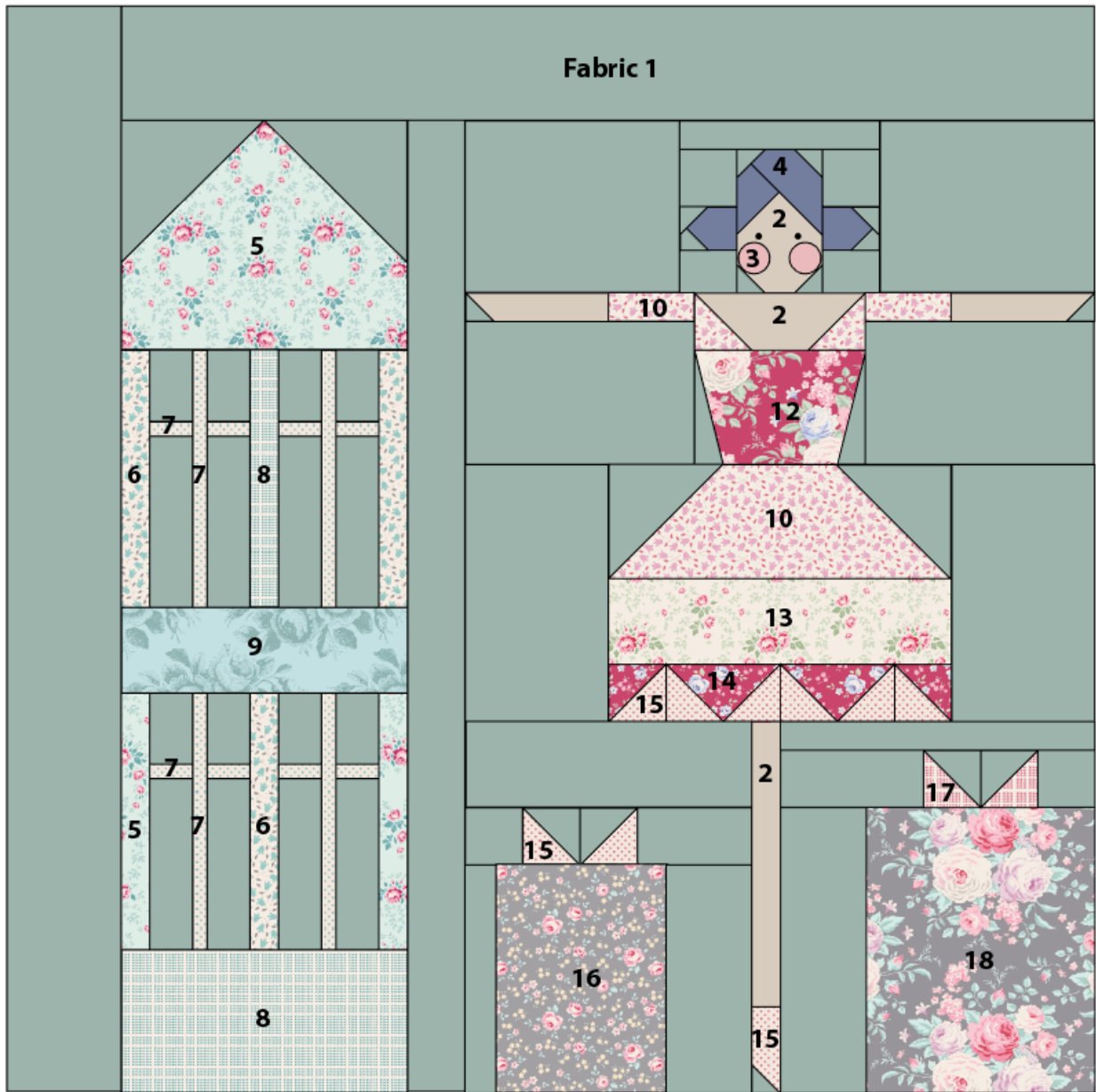


**Fig D** Layout and cutting for a Soldier block

Sizes include seam allowances

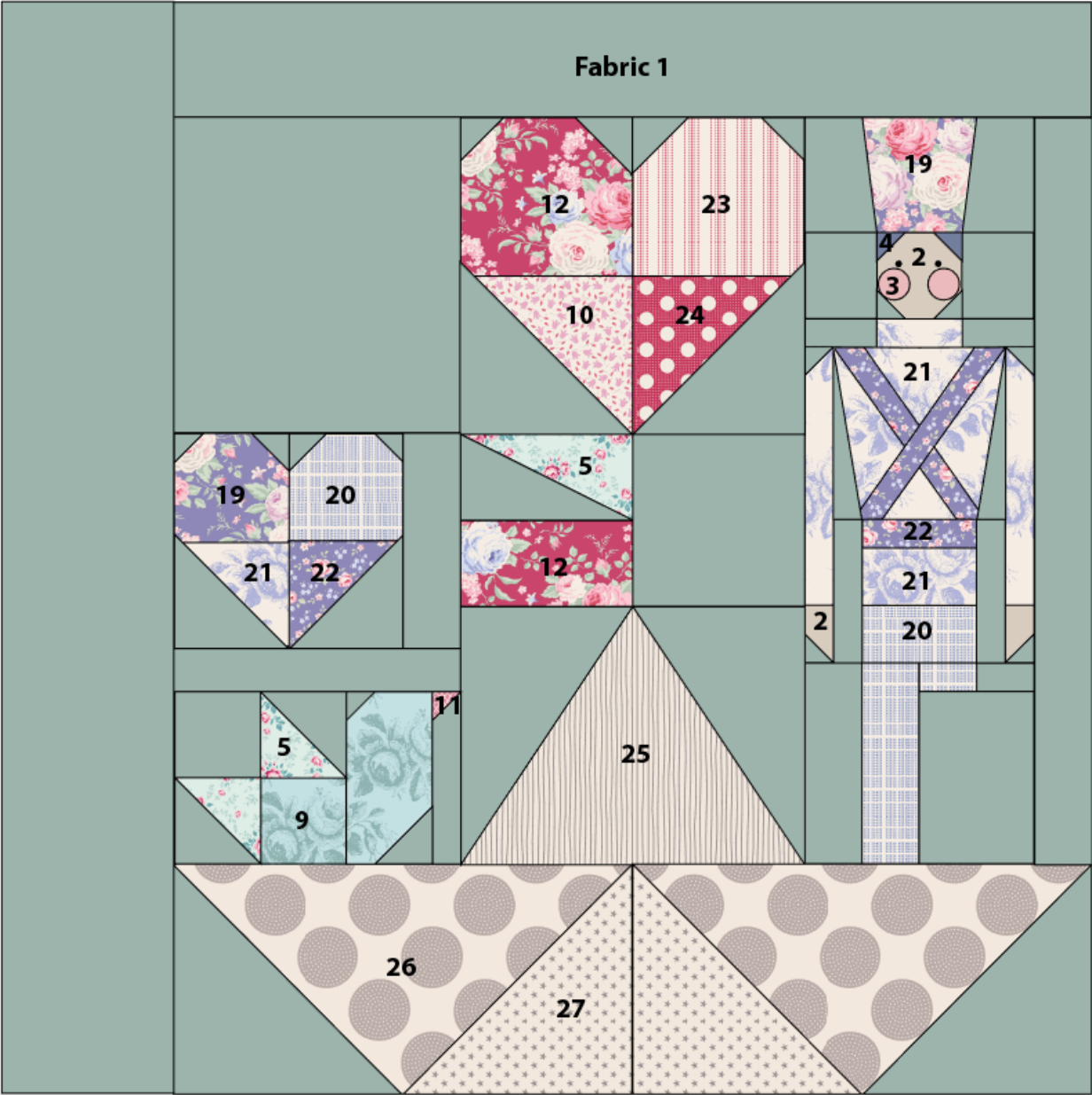


**Fig E** Fabrics used for a Ballerina block  
Numbers indicate fabrics (see Fig A)  
Make 6 blocks in total





**Fig F** Fabrics used for a Soldier block  
Numbers indicate fabrics (see Fig A)  
Make 6 blocks in total



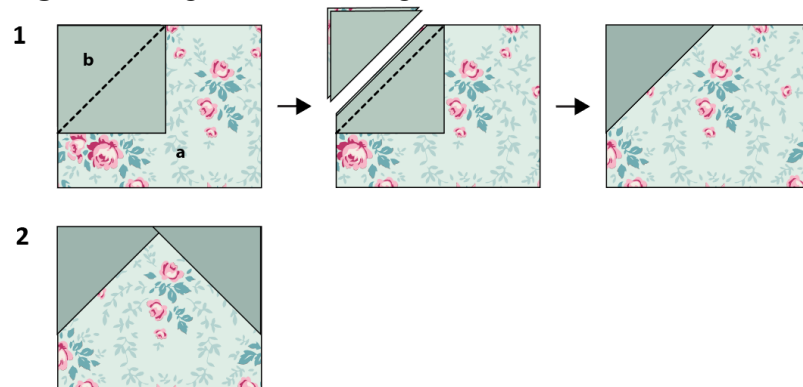
## Making a Ballerina Block

**6** A Ballerina block is built up from four sections – castle, head/chest/arms, skirt and gifts/leg. Many parts of the piecing are just simple squares and rectangles sewn together; other parts involve more complicated piecing techniques and these are described and illustrated in detail.

### *The Castle*

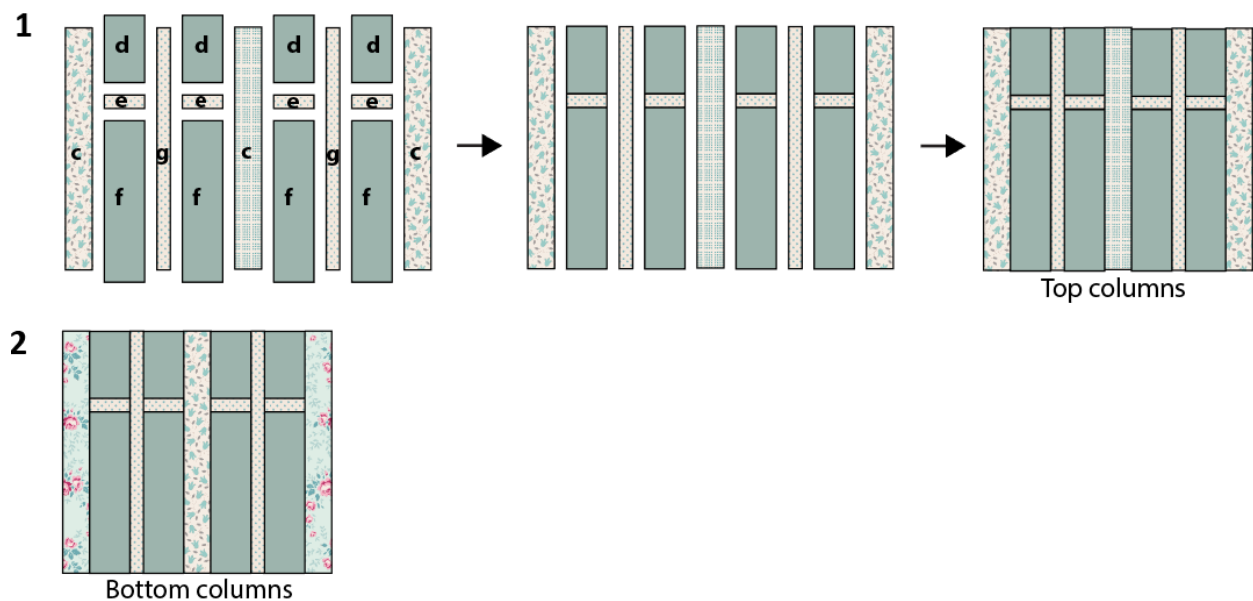
**7** Start with the roof pieces – one **a** rectangle and two **b** squares. Pencil mark the diagonal line on the wrong side of the squares and place one square right sides together with the top left corner of the rectangle (**Fig G 1**). Pin if needed and then sew along the marked line and trim off excess fabric  $\frac{1}{4}$ in (6mm) outside the sewn line. Press the triangle outwards. Repeat this to make another triangle on the other side of the rectangle, angling the marked line in the opposite direction (**Fig G 2**).

**Fig G** Forming the corner triangles on the roof



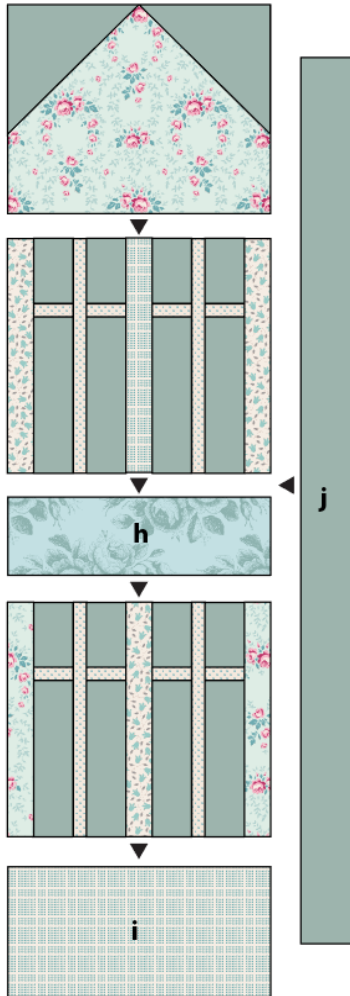
**8** For the columns in the top half of the building, lay out pieces **c, d, e, f** and **g** (see **Fig H 1**). Sew the **d/e/f** pieces together, four times. Now sew the units together in a row. Repeat this process to make another unit for the bottom columns but changing fabrics as in **Fig H 2**.

**Fig H** Making the building



**9** Take the castle units, plus pieces **h** and **i** and sew them together as in **Fig I**. Add piece **j** to the right-hand side.

**Fig I** Assembling the castle unit

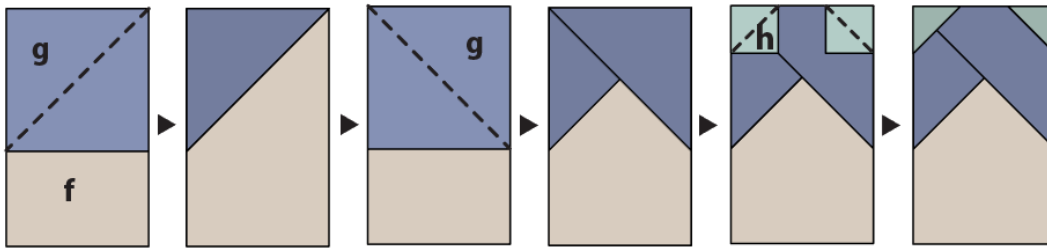
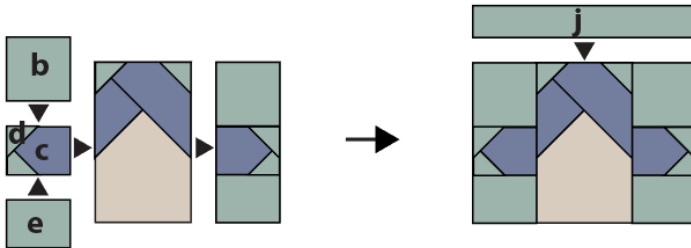
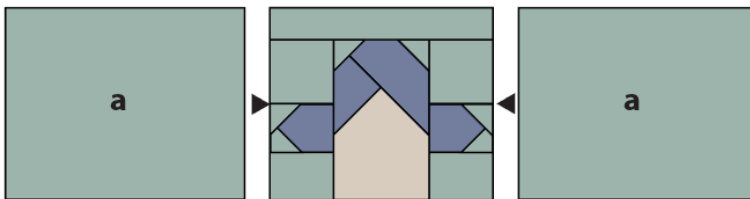


### *The Head, Chest and Arms*

**10 Making the head:** Lay out the pieces you have cut for the head section, **b** to **h**. Begin with the hair bun section, which is made by creating **d** triangles on one side of one **c** square, using the same technique as described in Step 7. Repeat this to make a second hair bun, but with the triangles on the right-hand side.

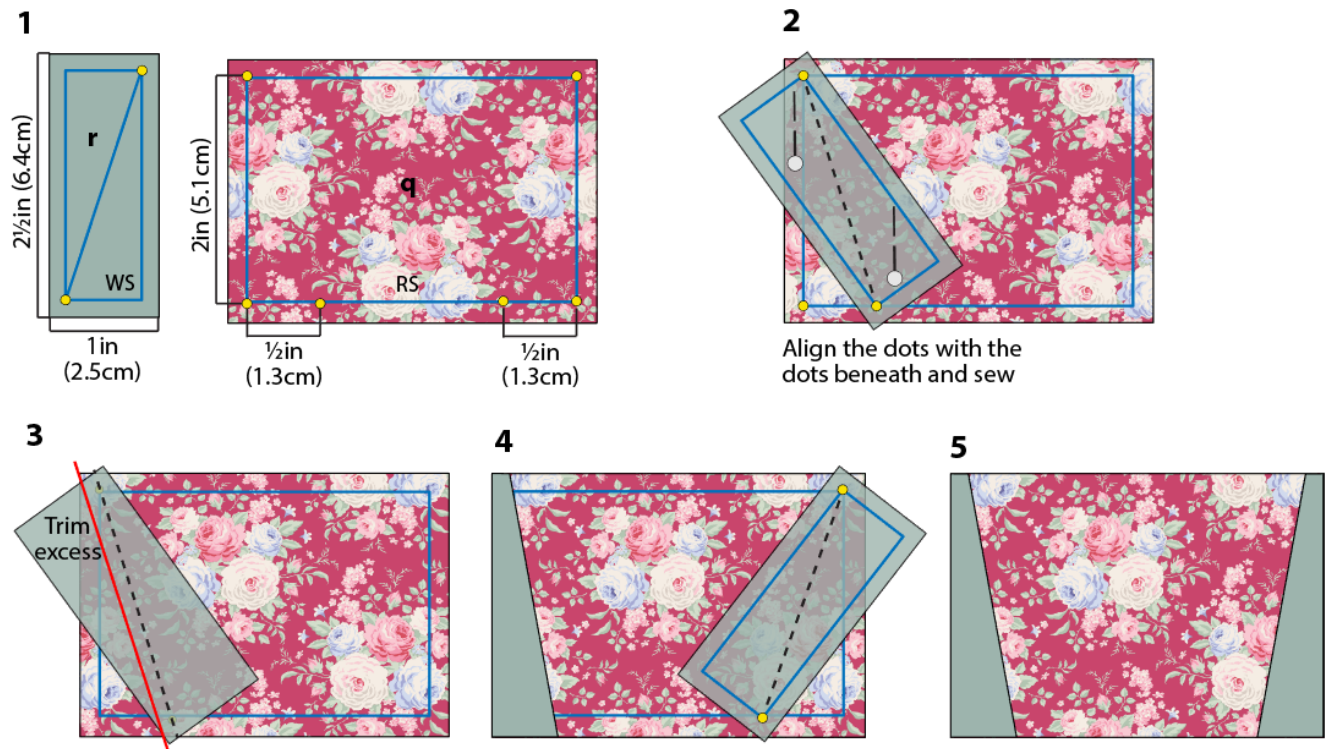
**11** To make the face, the triangle corner technique is used again, as shown in the stages of **Fig J**. Begin with an **f** rectangle and make a triangle in the top left corner with a **g** square (**Fig J 1**). Repeat on the other side of the rectangle. Take two small **h** squares and create triangles on the top corners of the head.

**12** Now assemble the head as shown in **Fig J 2**. Add piece **j** to the top of the head. Sew a rectangle (**a**) to the sides of the head, as in **Fig J 3** and then press.

**Fig J** Making the head**1****2****3**

**13 Making the arms:** Lay out the pieces you have cut for the ballerina arms, **k**, **l**, **m** and **n**. Use the small **l** square to create a corner triangle on the **k** rectangle (see **Fig C**) using the same method as before. Sew piece **m** to the right-hand side of **k** and then add piece **n** to the bottom of the unit. Make another arm like this, but facing the opposite way.

**14 Making the chest:** Lay out the pieces you have cut for the ballerina chest, **o**, **p**, **q** and **r**. Use the **p** squares to create corner triangles on the bottom corners of the skin piece **o**. For the **q/r** unit we will use a technique to create a tall triangle (this method is used many times for this quilt). Use a removable marker to mark the  $\frac{1}{4}$ in (6mm) seam allowance on the wrong side (WS) of one **r** rectangle (the solid fabric looks the same on both sides). Mark a diagonal line on this **r** piece, in the direction shown in **Fig K 1**. The line should bisect the seam allowance (*not* the outer corners of the shape). Mark the diagonal line on the other piece **r** in the opposite direction. Mark the seam allowance on the right side (RS) of the print rectangle **q**. Mark dots on the seam allowance line and also mark dots  $\frac{1}{2}$ in (1.3cm) away from the bottom seam allowance line, as shown. Take piece **r**, place it right sides together with the print piece, angling it so that the marked dots match, as in **Fig K 2**. Pin in place and then sew along the marked line. Trim off excess fabric  $\frac{1}{4}$ in (6mm) away from the sewn line (**Fig K 3**). Press the triangle into place. Create the long triangle on the other side of the print piece by angling the other **r** piece in the opposite direction (**Fig K 4**). Sew, trim and press as before (**Fig K 5**). Check the unit is  $3\frac{1}{2}$ in x  $2\frac{1}{2}$ in (9cm x 6.4cm).

**Fig K** Making the ballerina chest

**15** Take the two arm sections and sew them to either side of the chest section (see **Fig E** for layout if needed).

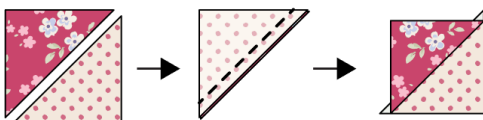
### *The Skirt*

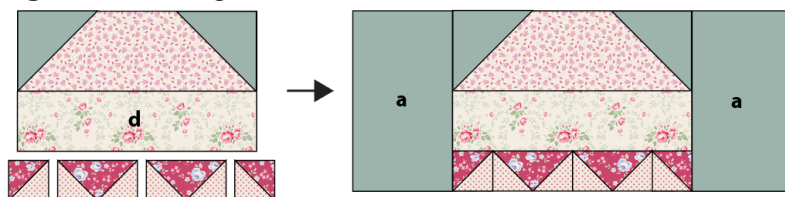
**16** The upper skirt is made by creating triangle corners, as done before in Step 7. Take both **c** squares for the upper skirt and mark a diagonal line on the wrong side of each one. Place the squares right sides together with print piece **b**, aligning them with the top corners. Sew along the diagonal lines, trim excess fabric and press the triangles outwards. Sew piece **d** to the bottom of this unit.

**17** The lower skirt is made from half-square triangle (HST) units and flying geese units. For the HSTs, follow **Fig L**, cutting one **g** square of Fabric 14 in half along the diagonal and repeating with one **g** square of Fabric 15. Pair up two triangles as shown and then sew them together along the long edge and press open. Make a second HST with the other two triangles.

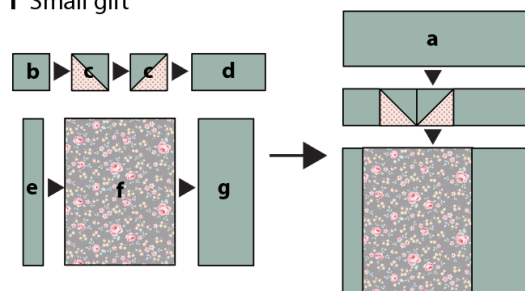
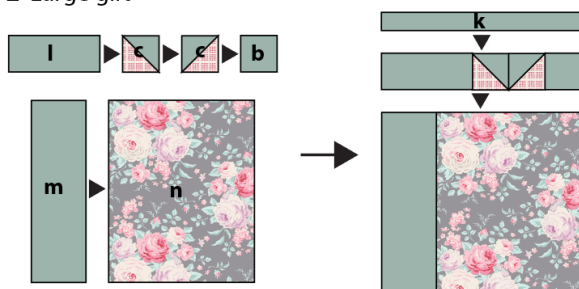
Using the **e** rectangles and **f** squares, make the flying geese as shown in **Fig M** (two in total).

Now take all of the units for the skirt and sew them together as in **Fig N**, making sure the HSTs and flying geese are positioned the right way round to create a zigzag pattern.

**Fig L** Making half-square triangle units

**Fig M** Making a flying geese unit**Fig N** Assembling the skirt***The Gifts and Leg***

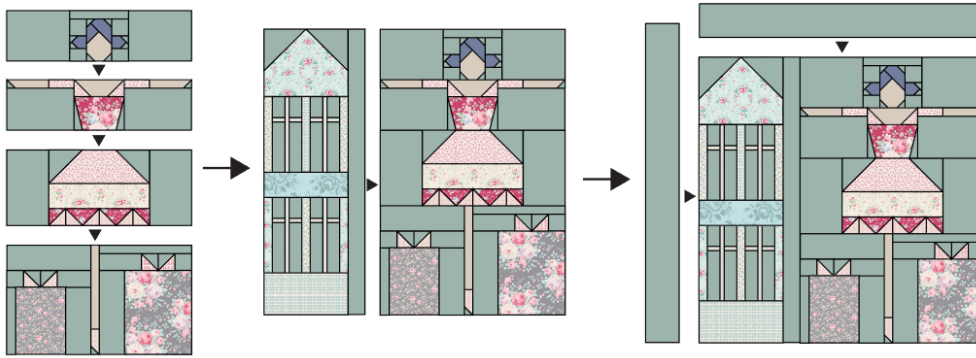
**18** The gifts use HST units to create the “bows”, so make these using the same method as before but using the correct fabrics for the unit. For the small gift, lay out the pieces as shown in **Fig O 1** and sew them together in the stages shown. Make the large gift in a similar way, using the correct pieces and fabrics, as in **Fig O 2**.

**Fig O** Making the gifts**1** Small gift**2** Large gift

**19** Make the leg by using square **j** to create a triangle on the end of piece **i**. Add piece **h** to the top of the unit. Now sew the gift units together with the leg unit between them.

***Assembling the Ballerina Block***

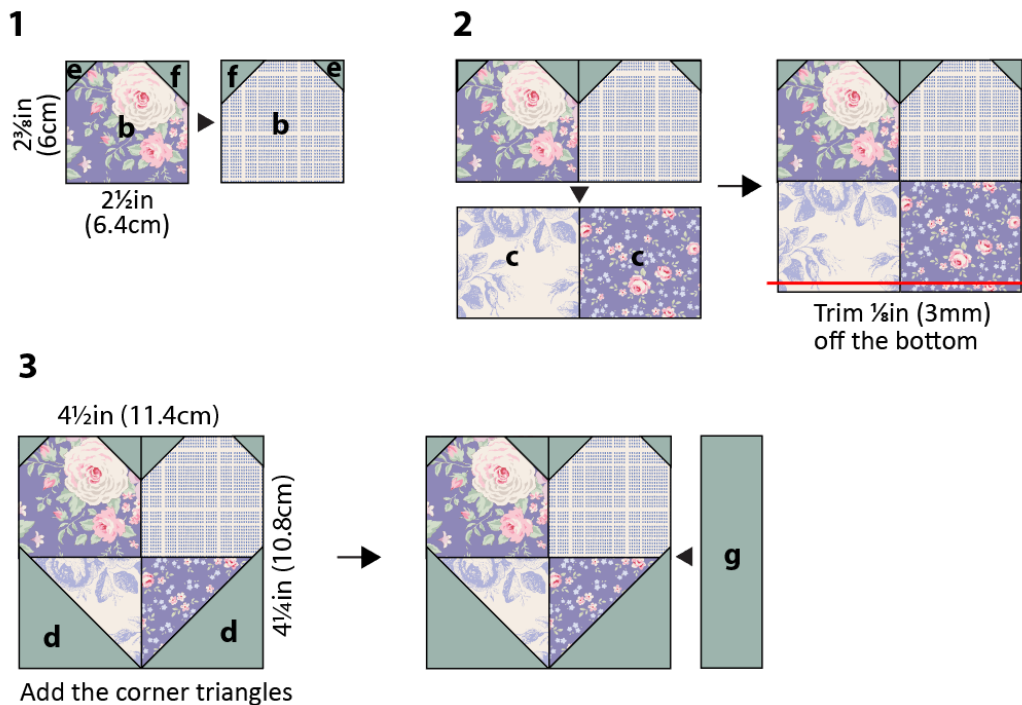
**20** Lay out the sections for the block as in **Fig P** and sew them together. Finally, add the strip of Fabric 1 across the top of the block and then the longer strip on the left-hand side. Press the block and check that it is 19½in (49.5cm) square. Make another five blocks like this.

**Fig P** Assembling the Ballerina block

## Making a Soldier Block

### *The Small Heart and Bird*

**21 Making the small heart:** Start by making corner triangles on the **b** pieces, using the same method as before. Have this print piece with the  $2\frac{1}{2}$ in (6.4cm) measure as the width (see **Fig Q 1**). On the first **b** piece, take care to add the smaller square (**e**) to the left-hand side and the slightly larger square (**f**) to the right-hand side (and then reverse this for the second **b** piece). Sew these two units together. Sew the two **c** pieces together and join them together with the top units. Trim  $\frac{1}{8}$ in (3mm) off the bottom of the unit, as shown in **Fig Q 2**. Now add the **d** squares to create triangles on the bottom corners (**Fig Q 3**). Add piece **g** to the right-hand side of the heart to finish the unit.

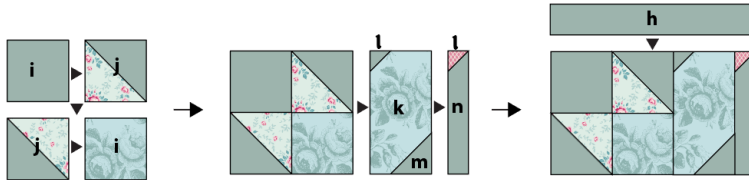
**Fig Q** Making the small heart

**22 Making the bird:** This unit uses two half-square triangle (HST) units. Make these as you did before in Step 17, using the correct fabrics for this part of the block and cutting the squares along the diagonal, as before. Lay out these two units with two different fabrics of piece **i** and sew

together as in **Fig R**. Create corner triangles on piece **k**, using the smaller **l** square at the top and the slightly larger **m** square at the bottom, as shown. To make the beak, take rectangle **n** and small square **i** of Fabric 11, and create a corner triangle on the top left-hand corner of the rectangle, using the same method as before. Sew these units of the bird together and then add piece **h** to the top.

**23** Sew the small heart unit to the top of the bird unit and then add piece **a** to the top.

**Fig R** Making the bird



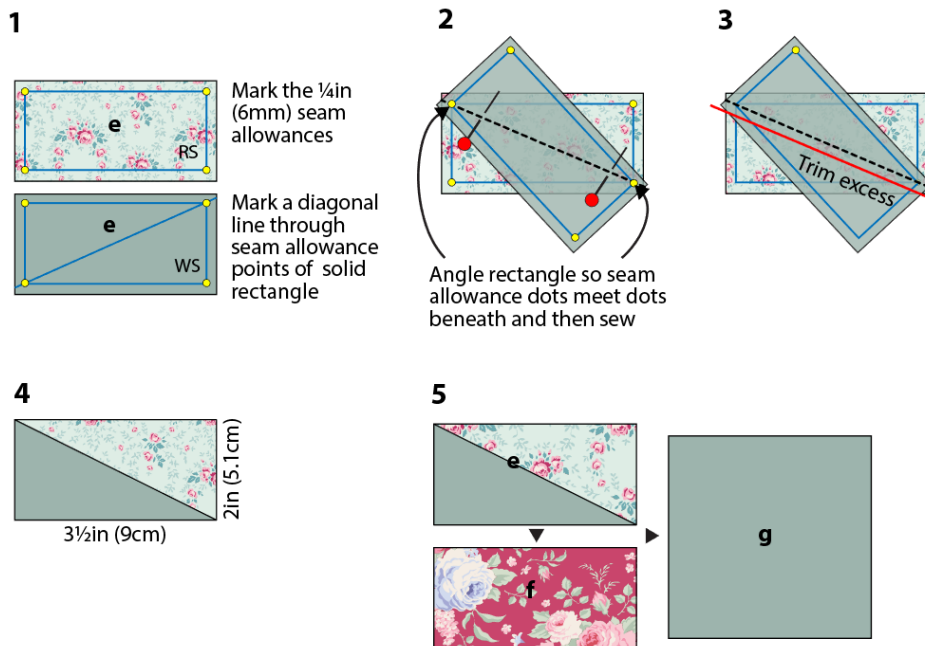
### *The Large Heart, Flags and Sail*

**24 Making the large heart:** Make this heart using the same process as the small heart, except that this time *no* trimming is needed. Follow **Fig D** for the layout of the pieces and make sure you use the correct size of squares when creating the corner triangles.

**25 Making the flag:** The top flag is created by making a half-rectangle triangle unit, using one e piece of Fabric 1 and one of Fabric 5. Follow **Fig S**, marking the  $\frac{1}{4}$ in (6mm) seam allowances and dots at the corners, on the right side of the print fabric and the wrong side of the solid fabric. On the solid fabric, mark a diagonal line from corner to corner of the seam allowance in the direction shown (**Fig S 1**). Place the fabrics right sides together, angling the solid fabric so the dots at the ends of the diagonal line match the dots on the fabric beneath (**Fig S 2**). Pin in place and then sew along the diagonal line. Trim excess fabric  $\frac{1}{4}$ in (6mm) from the sewn line (**Fig S 3**) and press. Check the unit is the size shown in **Fig S 4**.

Now sew piece **f** to the bottom of the flag and piece **g** to the right-hand side (**Fig S 5**).

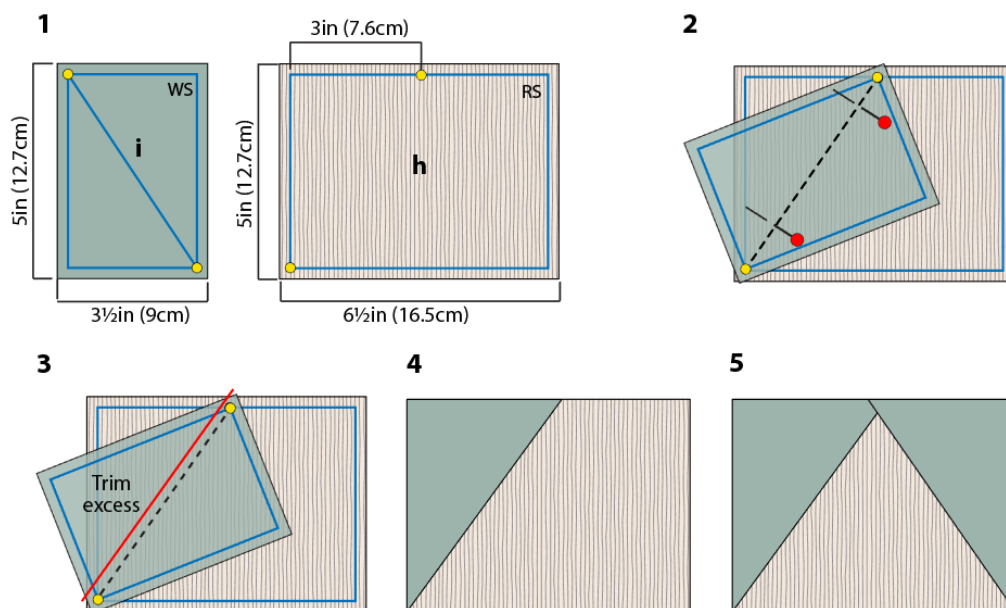
**Fig S** Sewing the flags unit





**26 Making the sail:** The sail is sewn in a similar way to the ballerina's chest in Step 14, except the measurements and fabrics are different. Follow **Fig T 1** for marking the seam allowances and dots on solid piece **i** and print piece **h**. Angle the solid piece as in **Fig T 2**, aligning the dots, sew along the diagonal and then trim excess (**Fig T 3**). Press the triangle outwards (**Fig T 4**). Add the triangle on the other side in the same way, but on the solid fabric piece mark the diagonal line in the opposite direction and angle the piece the opposite way before sewing in place. The sewn unit should look like **Fig T 5**.

**Fig T** Sewing the sail

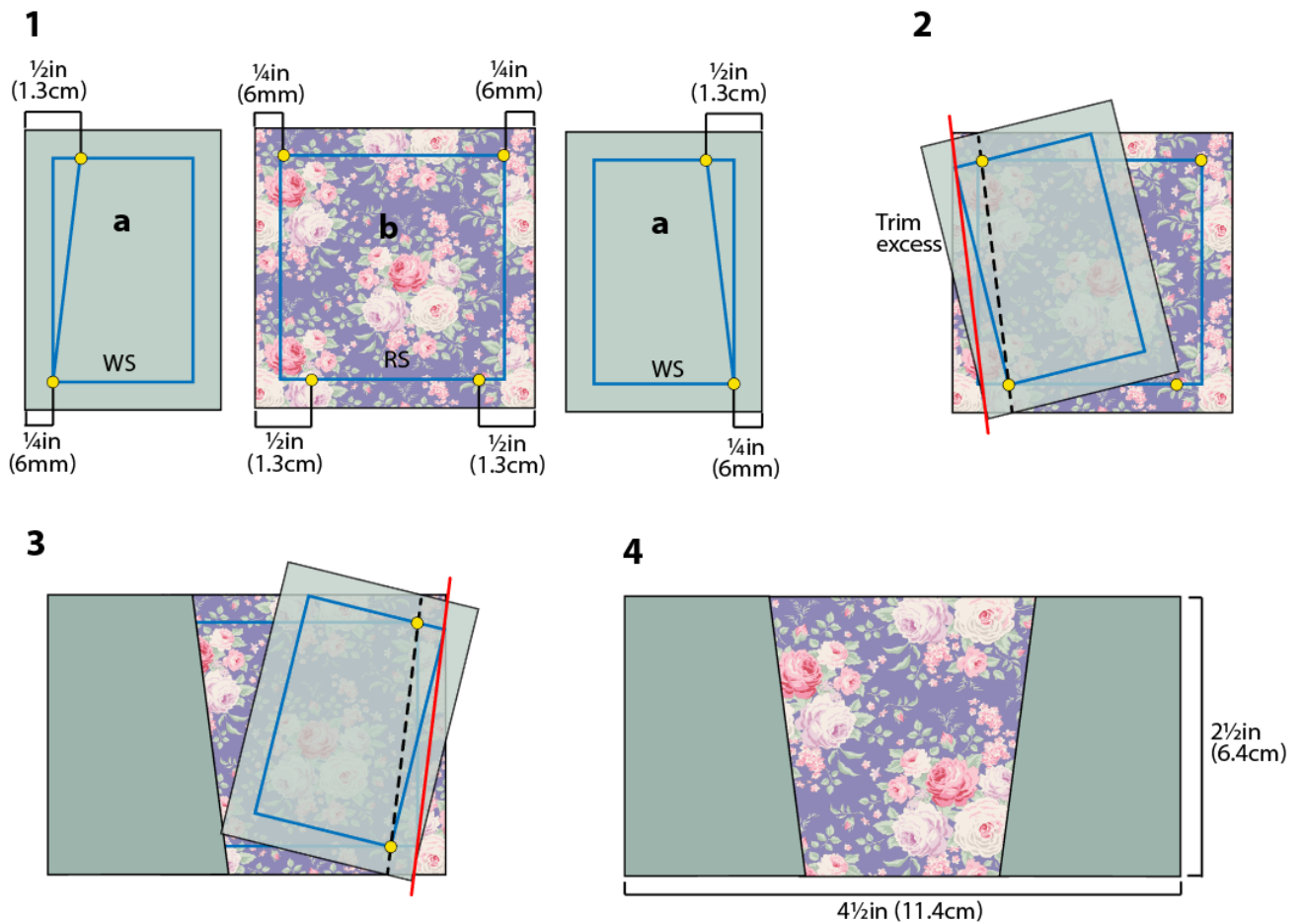


**27** Now take the large heart unit, the flags unit and the sail unit and sew them together into a column (see **Fig F** for positions).

### *The Soldier*

**28 Making the soldier's helmet:** The helmet is sewn in a similar way to the ballerina's chest in Step 14, except the measurements and fabrics are different. Follow **Fig U 1** carefully for marking the seam allowances, diagonal sewing lines and the positioning of the dots on the solid pieces **a** and print piece **b**. Angle the first solid piece as in **Fig U 2**, sew along the diagonal line, trim excess and press the solid piece outwards. Repeat this on the other side with the second piece of solid fabric (**Fig U 3**). Check the unit is the size given in **Fig U 4**.

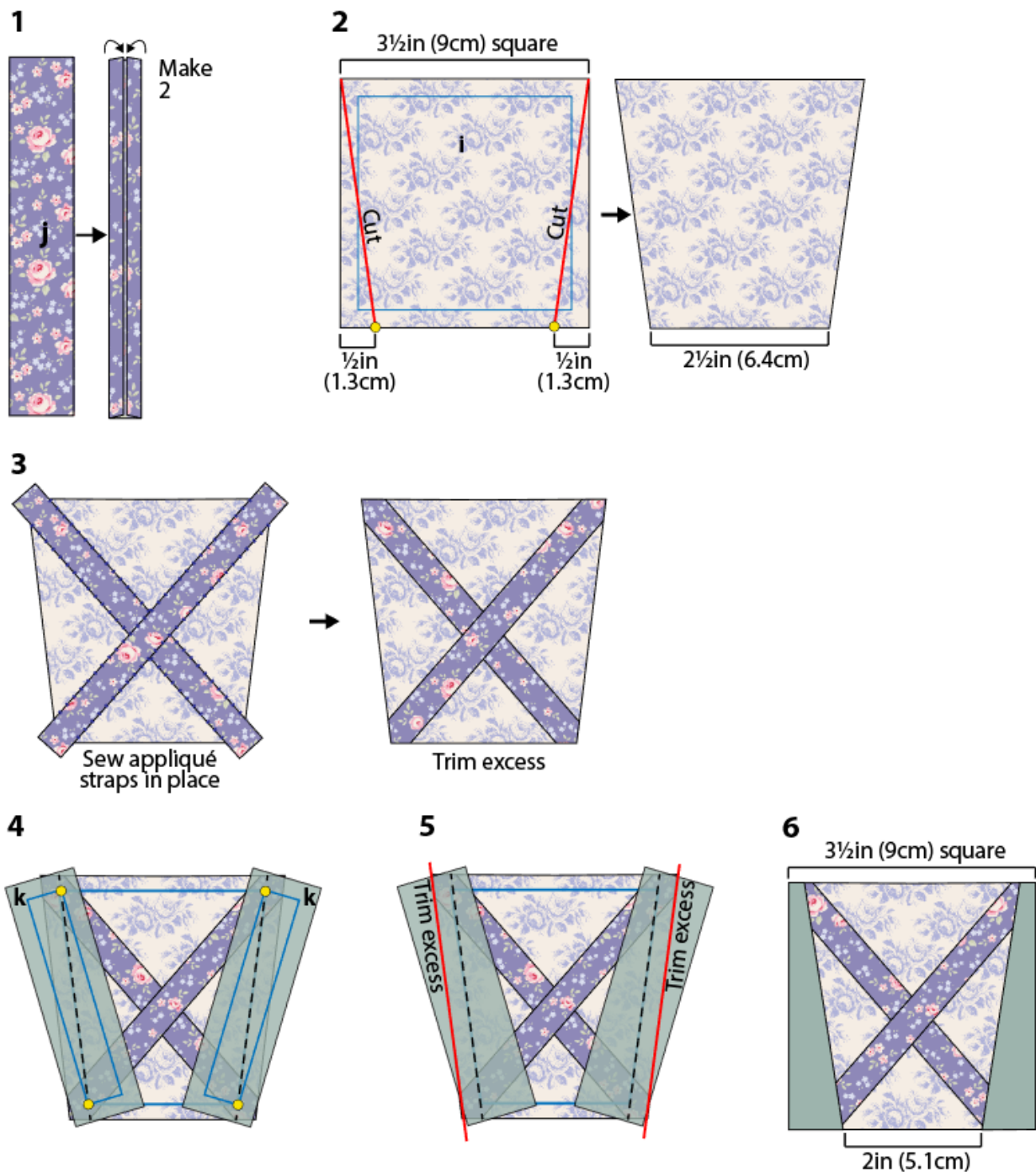
**Fig U** Sewing the soldier's helmet



**29 Making the soldier's jacket:** Start by preparing the appliqué straps, as follows. Take one **j** strip and press each long side in towards the middle, so the strap is about  $\frac{1}{2}$ in (1.3cm) wide (**Fig V 1**). Repeat with the other **j** strip.

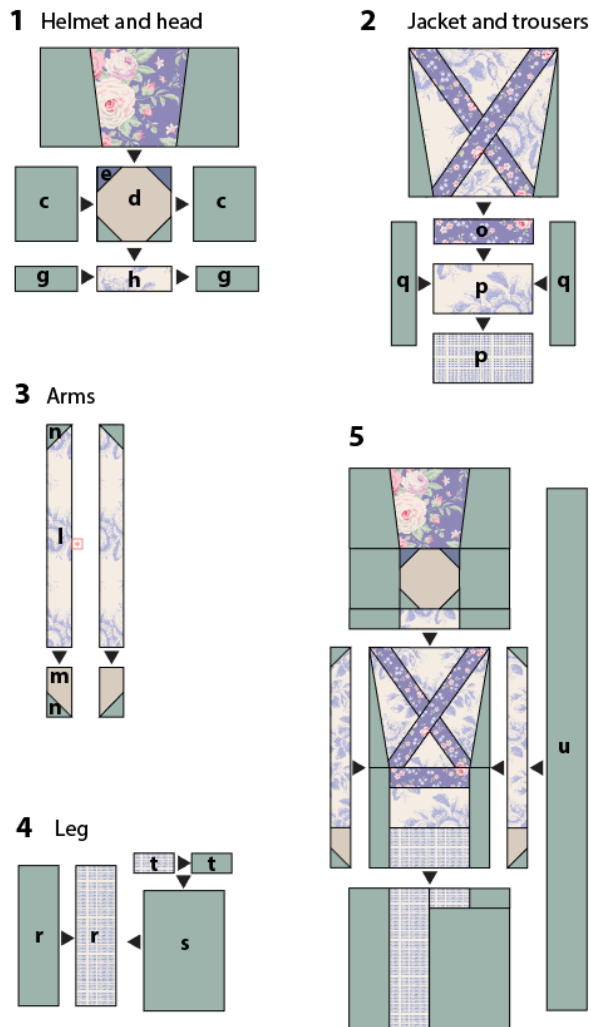
**30** Take jacket piece **i** and trim the sides at an angle following the measurements in **Fig V 2**. Now position the appliqué straps on the jacket, in a cross shape as in **Fig V 3** and sew into place with small stitches and matching thread. Mark the  $\frac{1}{4}$ in (6mm) seam allowances on the jacket piece and also on the two solid **k** pieces. Mark the diagonal lines on the solid pieces as in **Fig V 4**. Angle the solid pieces so the seam allowance dots align with the dots beneath and sew along the diagonal lines. Trim excess fabric (**Fig V 5**) and press the triangles outwards (**Fig V 6**).

**Fig V Sewing the soldier's jacket**



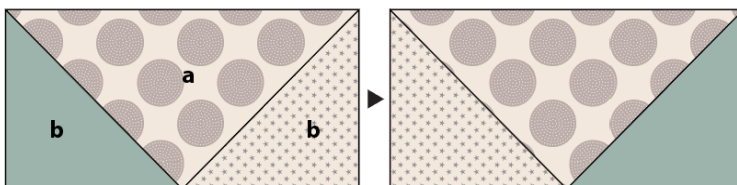
**31 Assembling the soldier units:** Follow **Fig W 1** to assemble the helmet and head pieces. The face is made by creating corner triangles, as done before. Sew the body pieces together as in **Fig W 2**. For the arms, create triangle corners at the ends of the **l** and **m** pieces, as in **Fig W 3**. Sew the leg section pieces together as in **Fig W 4**. Now sew the five sections of the soldier together as in **Fig W 5** and then add piece **u** to the right-hand side of the block.

**Fig W** Assembling the soldier units



**32 Making the boat:** Take one **a** piece of Fabric 26 and create corner triangles on it with **b** pieces of Fabric 1 and Fabric 27, using the same method as before. Press the triangles downwards (**Fig X**). Repeat to make a second unit (reversing the triangle fabric positions) and then sew the two units together.

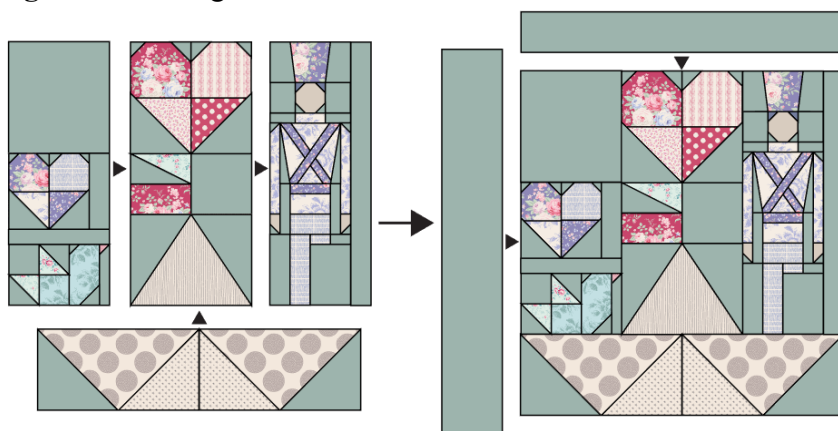
**Fig X** Making the boat



*Assembling the Soldier Block*

**33** Lay out the sections for the block as in **Fig Y** and sew them together. Finally, add the strip of Fabric 1 across the top of the block and then the longer strip on the left-hand side. Press the block and check that it is 19½in (49.5cm) square. Make another five blocks like this.

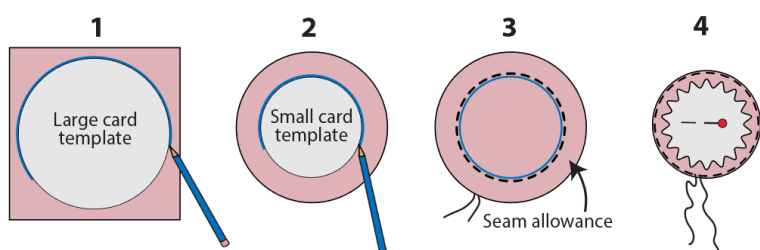
**Fig Y** Assembling the Soldier block



### *Adding Cheeks and Eyes*

**34** Once the blocks are made you can make the appliqué cheeks for the ballerina and soldier, following the stages of **Fig Z**. Draw a 1in (2.5cm) diameter circle onto thick card and another circle ½in (1.3cm) diameter and cut out the circles. Using Fabric 3, use the large card template to mark and cut out a fabric circle (**Fig Z 1**). Place the small circle card template in the centre of the fabric circle and use a pencil to mark the circle (**Fig Z 2**). Use a doubled thread to sew a circle of gathering stitches about ¼in (3mm) outside the marked line (**Fig Z 3**). Place the small card circle back onto the fabric and pin in place. Pull up the gathering threads, to gather the fabric around the card (**Fig Z 4**). Tie off the threads and press well. Remove the card and press again. You can leave the gathering thread in place if it doesn't show, or remove it. Make twenty-four circles like this in total. Sew the cheeks into place on the faces, using matching thread and tiny stitches.

**Fig Z** Making an appliqué circle for cheeks



**35** Sew eyes onto each ballerina and soldier, using all six strands of the black embroidery cotton, working French knots, with the thread wrapped twice around the needle. Secure the thread well at the back of each block.

### **Assembling the Quilt**

**36** Take your twelve blocks and lay them out in rows, alternating them as shown in **Fig B**. Sew each row together, pressing the seams of rows 1 and 3 in the opposite direction to rows 2 and 4. At the right-hand end of each row sew a 2½in x 19½in (6.4cm x 49.5cm) sashing strip of Fabric 1.

Sew the rows of the quilt together, matching seams neatly, and press. To finish, add the long horizontal sashing strip of Fabric 1 to the bottom of the quilt and press. The quilt top is now complete.

## Quilting and Finishing

**37** If you are quilting the quilt yourself you now need to make a quilt sandwich – you can do this in various ways, as follows.

- Use large stitches to tack a grid through the layers of the quilt in both directions, with lines about 4in (10cm) apart.
- Use pins or safety pins to fix the layers together.
- Use fabric glue, sprayed onto the wadding to fix the layers together.

If you are sending the quilt off to be commercially long-arm quilted you won't need to make a sandwich, as this is done when the quilt is mounted on the machine. When the layers of the quilt are secured you can quilt as desired.

**38** Use the prepared double-fold binding strip to bind your quilt. Sew the binding to the quilt by pinning the raw edge of the folded binding against the raw edge of the quilt. Don't start at a corner. Using a ¼in (6mm) seam, sew the binding in place, starting at least 6in (15.2cm) away from the end of the binding. Sew to within a ¼in (6mm) of a corner and stop. Take the quilt off the machine and fold the binding upwards, creating a mitred corner. Hold this in place, fold the binding back down and pin it in place. Begin sewing the ¼in (6mm) seam again from the top of the folded binding to within ¼in (6mm) of the next corner and then repeat the folding process. Do this on all corners. Leave a 6in (15.2cm) 'tail' of unsewn binding at the end.

**39** To join the two ends of the binding, open up the beginning and end of the binding tails, lay them flat and fold the ends back so the two ends touch. Mark these folds by creasing or with pins – this is where your seam needs to be. Open out the binding and sew the pieces together at these creases. Trim off excess fabric and press the seam. Re-fold the binding and finish stitching it in place on the front of the quilt.

**40** With the quilt right side up, use a medium-hot iron to press the binding outwards all round. Now begin to turn the binding over to the back of the quilt, pinning it in place. Use matching sewing thread and tiny stitches to slipstitch the binding in place all round, creating neat mitres at each corner. Press the binding and your lovely quilt is finished.

Tilda®  
 -----  
 FABRICS