

Vintage Christmas

Finished Quilt 52 1/2" x 60"

Vintage Christmas

Finished Quilt 52 1/2" x 60"

Fabric Requirements

A variety of red scraps ~ totaling 1/2 yard

A variety of green scraps ~ totaling 1 1/2 yards

A variety of light scraps ~ totaling 2 1/2 yards

1/2 yard | Binding

3 1/2 yards | Backing

Temecula Quilt Co

33353 Temecula Parkway

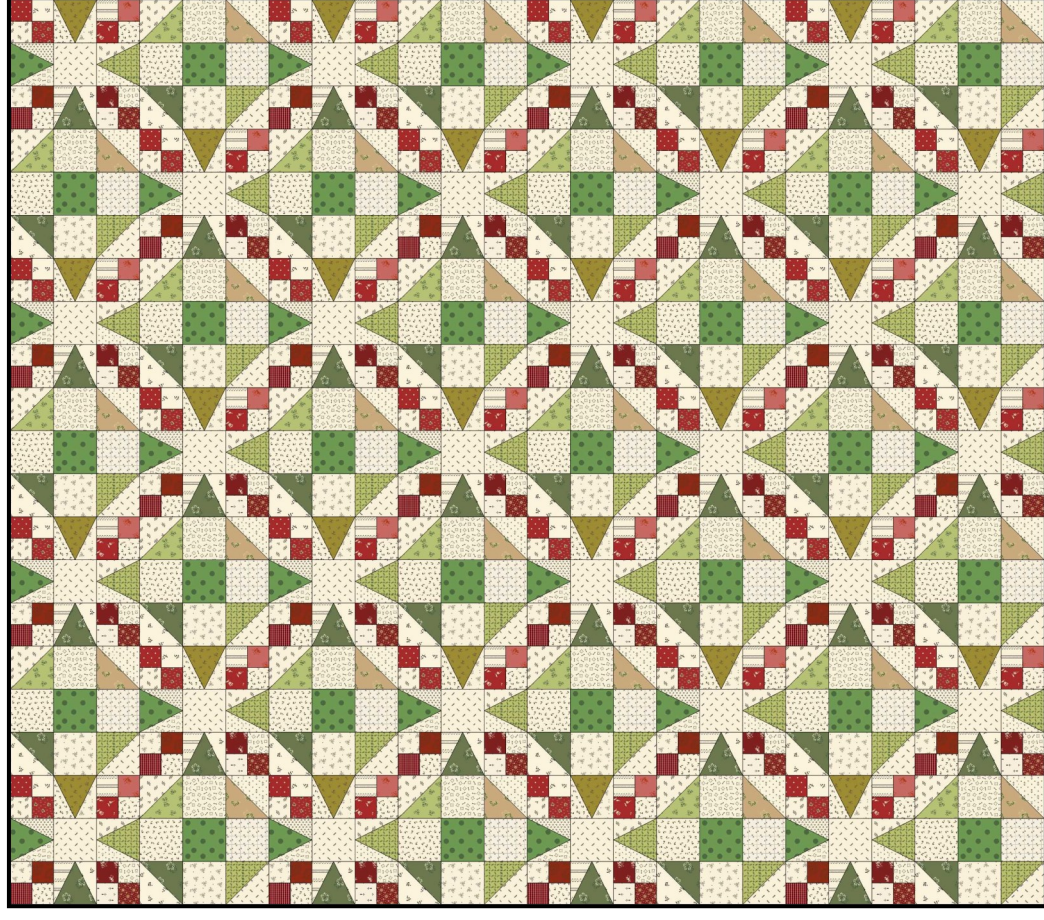
Temecula CA 92592

951-302-1469

temeculaquiltco.com

temeculaquiltco.blogspot.com

What has been will be done again, there is nothing new under the sun Ecc 1:9



Temecula Quilt Co.

33353 Temecula Parkway | Temecula CA 92592

temeculaquiltco.com | 951-302-1469

Vintage Christmas

Finished Quilt - 52^{1/2}" x 60"

Cutting

From a variety of red prints, cut:

244 squares, 1^{3/4}" x 1^{3/4}"

From a variety of green prints, cut:

28 squares, 3" x 3"

56 squares, 3^{1/2}" x 3^{1/2}"

112 triangles using template

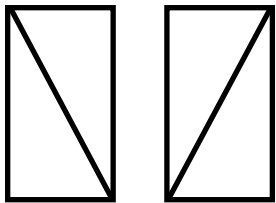
From a variety of light prints, cut:

56 squares, 3^{1/2}" x 3^{1/2}"

112 squares, 3" x 3"

244 squares, 1^{3/4}" x 1^{3/4}"

110 rectangles, 2^{1/2}" x 4" | cut diagonally as diagrammed



Cut 55

Cut 55

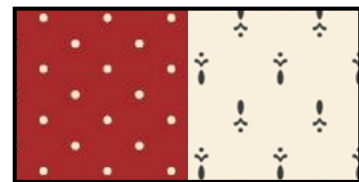
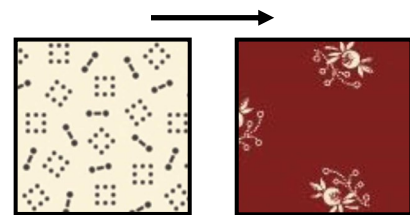
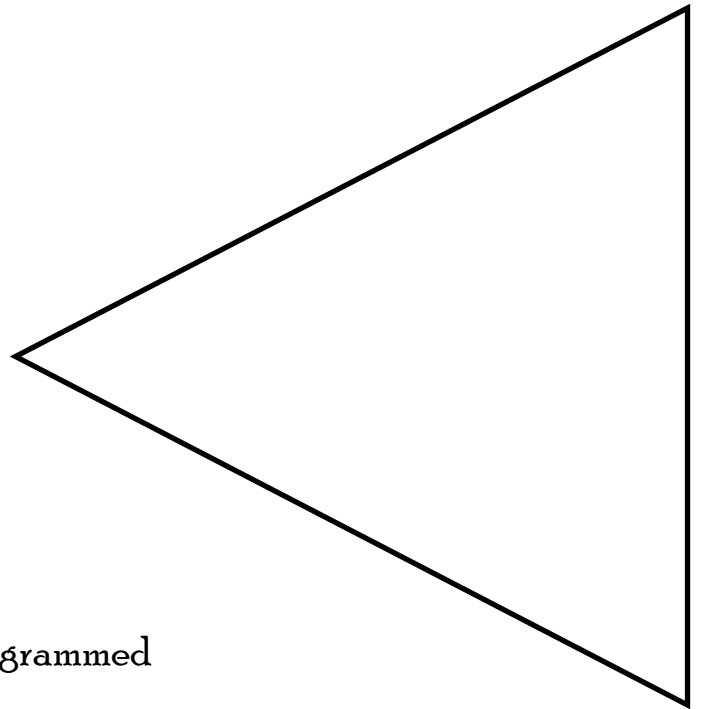
From pink print, cut:

6 strips, 2^{1/4}" x 42" | binding

Making the Triangle Blocks

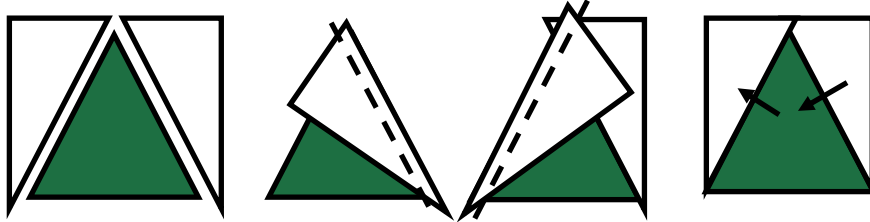
Make one four patch unit as follows repeat to make 112 units. Press all seam allowances as indicated by the arrows in the illustration.

1. Lay out the red and light squares in two rows of two as shown. Sew the units in each row together. Sew the rows together to make the four patch unit. Four patch unit should measure 3" square, including seam allowances.

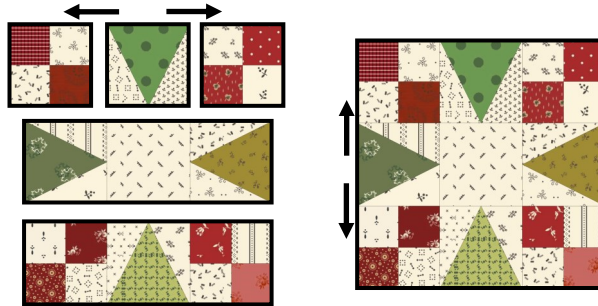


Make one triangle unit as follows repeat to make 112 units. Press all seam allowances as indicated by the arrows on the illustration.

2. Use one green triangle and two light triangles cut in opposite directions. Triangles are intentionally oversized to allow for squaring up. Sew two light triangles to green triangle as diagrammed. Press seams as indicated by arrows. Square unit to 3" square, including seam allowances. *The angles in this unit are a little tricky, make one unit first and then continue to make 112 units.*



3. Using four triangle units, four patch units and one 3" light square lay out block in three rows. Sew the units in each row together. Join the rows alternating seams as diagrammed by the arrows to make a Triangle block that measures 8" square including seam allowances.



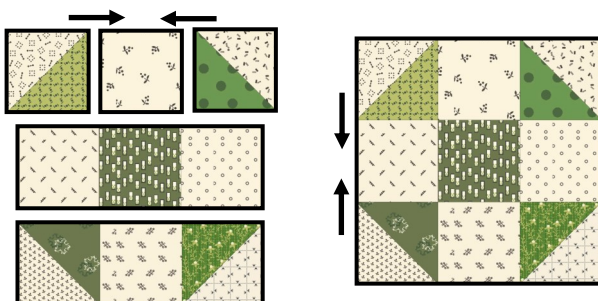
Making the Shoofly Blocks

The instructions are for one block; repeat to make 28 blocks. Press all seam allowances as indicated by arrows in illustrations.

1. Draw a diagonal line from corner to corner on the wrong side of two light 3 1/2" squares, and layer on top of a green 3 1/2" square, right sides together. Sew 1/4" from both sides of the drawn line. Cut on the lines to yield four half-square-triangle units. Trim to 3" square, including seam allowances. Repeat with remaining 3 1/2" squares for a total 112 half-square-triangle units.



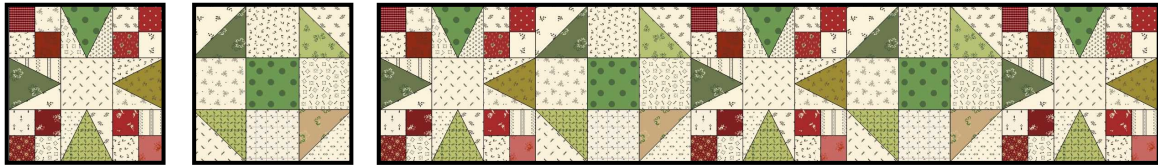
2. Arrange four half-square-triangle units, four light 3" squares and one dark 3" square as shown. Sew the units in each row together. Sew the rows together to make one Shoofly block that measures 8" square, including seam allowances. Repeat to make a total of 28 Shoofly blocks



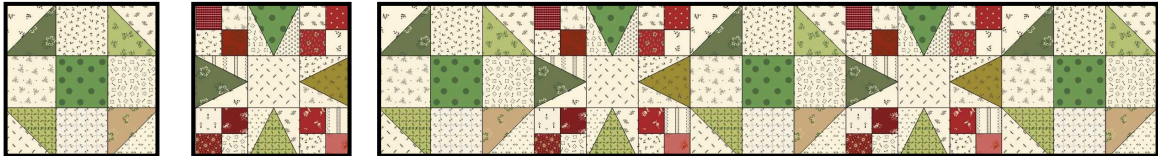
Assembling the Quilt Top

Referring to quilt assembly diagram. Layout rows as follows:

1. Layout four rows with four Triangle blocks and three Shoofly blocks.

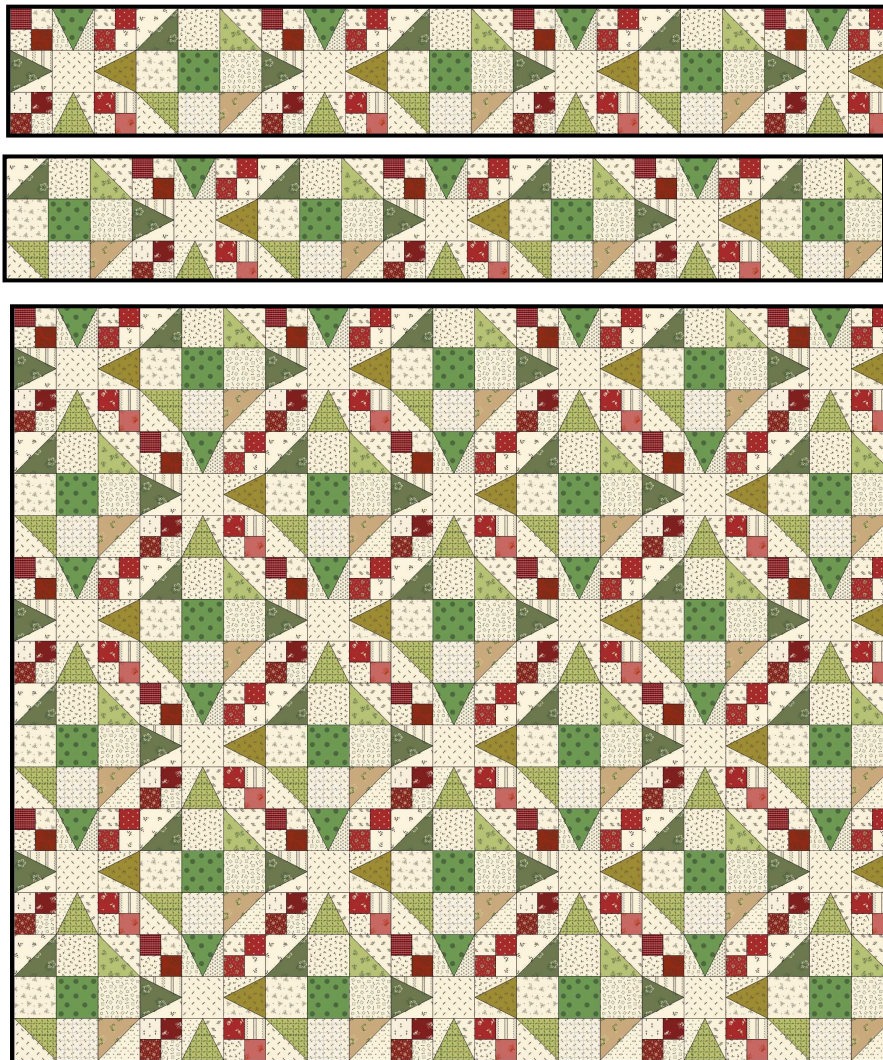


2. Layout four rows with four Shoofly blocks and three Triangle blocks.



3. Join the rows, aligning the seam intersections between the blocks.

4. Quilt as desired and bind using $2\frac{1}{4}$ " strips.



Vintage Christmas

Quilt Assembly Diagram
Finished Quilt $52\frac{1}{2}$ " x 60"