

PATCHWORK POTTERY

quilted craft patterns by Laurraine Yuyama

finished size: 8" tall & 7" wide, 13 inches from spout to handle

Materials

- 1/3 yard cotton print for body, spout, handle & knob
- fat quarter each of cotton prints for binding & lining
- 12 x 15" low-volume cotton for body & lid
- 12 x 15" 7oz high loft polyester batting
- felt scraps for leaves & template
- 14" length of 1/2" cotton piping
- 14" length of 1" cotton piping
- 30" length of ribbon or trim
- polyester stuffing
- embroidery floss
- 2 buttons

Tools

- marking pen
- embroidery needle
- pins & masking tape
- safety pin attached to string
- rotary cutter & mat (optional)
- turning tool such as a chopstick
- pinking shears & mini iron (optional)

* sewing level: ⓧⓧⓧⓧⓧ

* metric conversion chart inside



PDF
pattern
#13



QUILTED TEAPOT

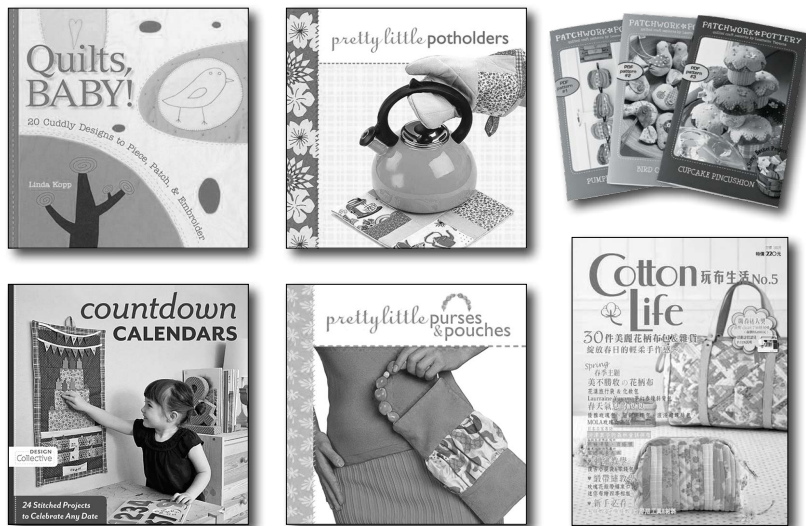
www.patchworkpottery.com



©2014 Laurraine Yuyama. All rights reserved. New Westminster, BC Canada. PatchworkPottery patterns are intended for personal use only. Items made using this pattern are not to be sold. Do not share or copy any part of this pattern unless otherwise stated. Thank you for respecting the designer's copyright.

PATCHWORK*POTTERY

quilted craft patterns by Laurraine Yuyama



More patterns can be found in these books.

Share your creations! Join the PatchworkPottery Patterns flickr group:
<http://www.flickr.com/groups/patchworkpotterypatterns/>

If you have any questions or suggestions on how to improve this pattern, please contact me: laurraine@patchworkpottery.com

Thank you for choosing my patterns!

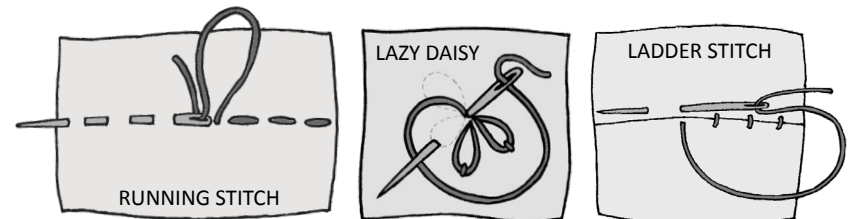
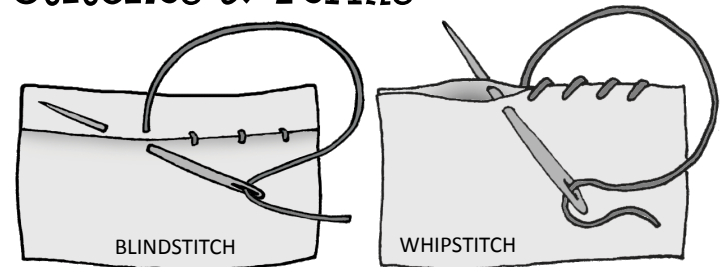
For more patterns & designs by Laurraine Yuyama, please visit:

www.patchworkpottery.com

©2014 Laurraine Yuyama. All rights reserved. New Westminster, BC Canada. PatchworkPottery patterns are intended for personal use only. Items made using this pattern are not to be sold. Do not share or copy any part of this pattern unless otherwise stated. Thank you for respecting the designer's copyright.

Step-by-step illustrations by Laurraine Yuyama.

Stitches & Terms



BIAS: cut diagonally on a 45° angle

PINKING SHEARS: fabric scissors that cut a zigzag

Metric Conversion Chart

<u>inches</u>	<u>centimetres (approximate)</u>
1/8"	0.3 cm
1/4"	0.6 cm
3/8"	1 cm
1/2"	1.3 cm
3/4"	2 cm
1"	2.5 cm
2"	5 cm
2 1/2"	6.5 cm
4 1/2"	11.5 cm
8"	20.5 cm
9" (1/4 yard)	23 cm
18" (1/2 yard)	46 cm
36" (1 yard)	91.5 cm

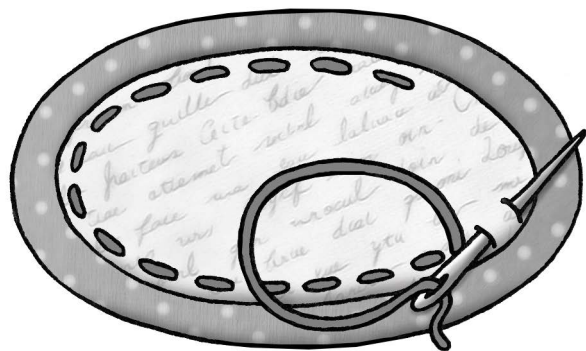
to convert
inches
yards

into
centimetres
metres

multiply by
2.54
.915

fat quarter: 18 x 22" / 50 x 55 cm fat eighth: 9 x 22" / 25 x 55 cm

14. Repeat step 9 to bind the edge of the lid. Embroider a running stitch around the entire edge $\sim\frac{1}{8}$ " away from the binding.



15. Attach the knob to the centre of the lid. Secure leaves & button to the edge of the lid with embroidery floss. Add the lid to the teapot & now you're ready to pour yourself a cup of tea!



QUILTED TEAPOT

finished size: 8" tall, 7" wide & 13" from spout to handle

Use $\frac{1}{4}$ " seam allowance unless otherwise stated.

Please read all of the instructions before starting your project.

Cutting

From fabric A, cut:

1 - 2 x 12 $\frac{1}{2}$ " bias strip for base

1 - 3 x 12" bias strip for handle, 1 - knob

6 - teapot bottom, 2 - 5 x 9" rectangles for spout

From fabric B, cut:

6 - teapot top, 1 - lid

From fabric C, cut:

1 - 2 x 15" bias strip for binding the lid

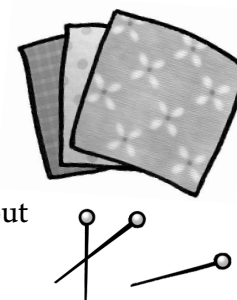
1 - 2 x 18" bias strip for binding the rim of teapot

From lining fabric, cut:

1 - 8 x 8" square for lid backing, 6 - lining & batting

From batting, cut:

1 - 5 x 5" square for lid, 6 - lining & batting using a template cut from felt (the felt template will stick to the batting)

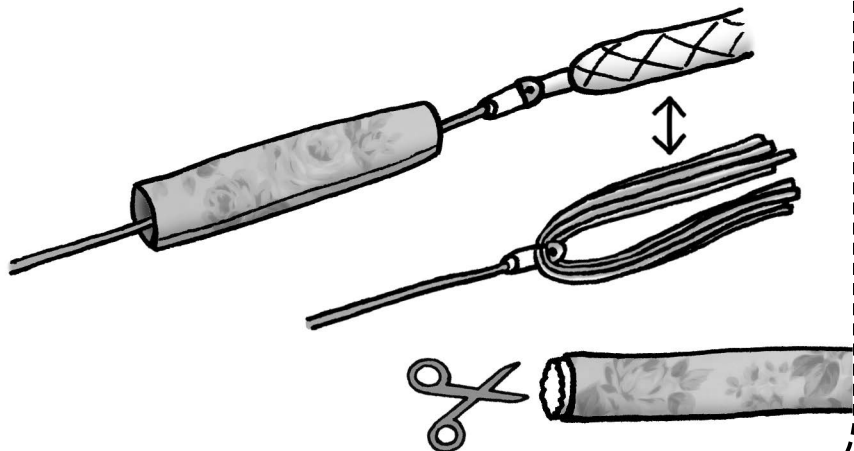


Handle & Base

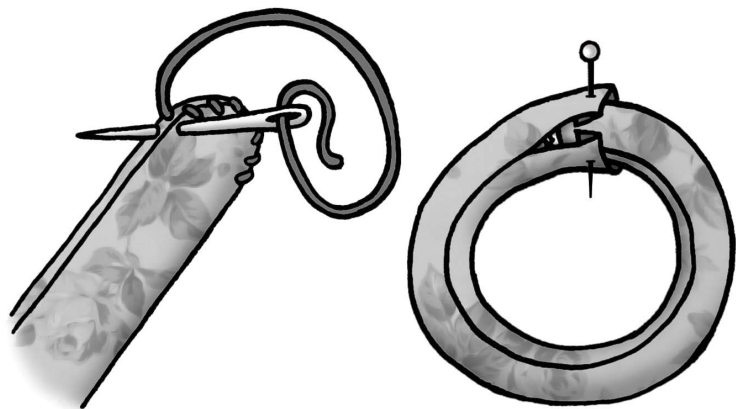
1. Fold the *bias* strips in half lengthwise and sew along edge. Pass the safety pin with string attached through the tube and attach the pin to the other end of the tube. Pull the pin back through turning the fabric tube right side out.



2. Pass the safety pin through the tubes again and attach it to the end of the piping that has been wrapped with masking tape. Pull the piping through the tube & trim. *TIP: You can use several strands of yarn folded in half in place of piping.*

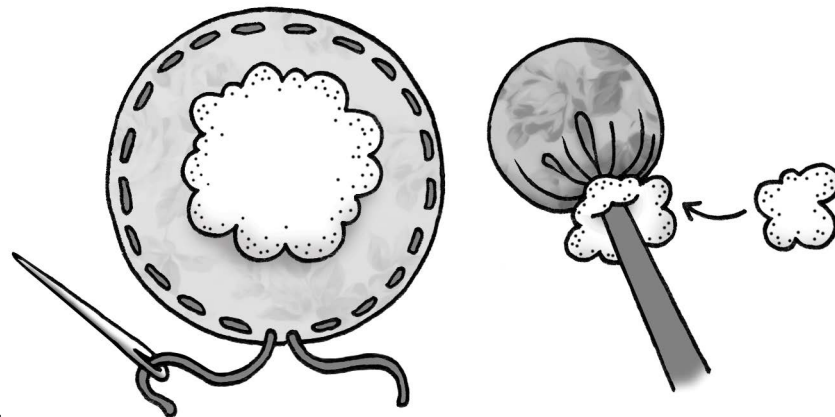


3. *For handle:* Whipstitch the ends of the thicker coil closed to form a rounded shape. *For base:* Undo $\frac{3}{4}$ " of the stitching at one end of the thinner coil, trim off $\frac{3}{4}$ " of the piping, and fold the fabric in $\frac{1}{4}$ " at end. Insert the other end of the coil into the empty end, pin to secure and *blindstitch* together.

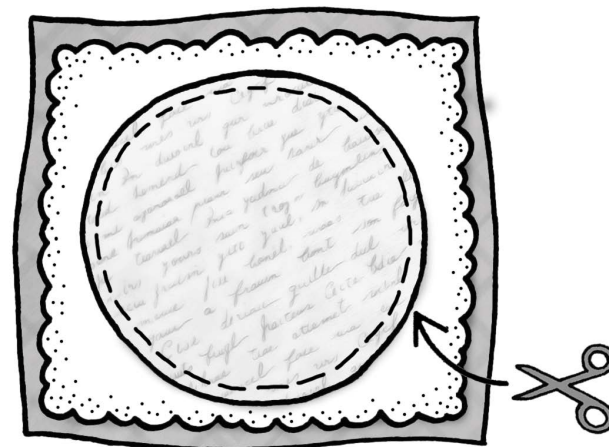


Lid

12. To make the knob, sew a *running stitch* around the edge of the *knob* circle using embroidery floss. Place a ball of batting in the centre of the wrong side, pull strings tight and tie a knot. Finish stuffing the knob through the small opening. *TIP: A paintbrush with the bristles cut short makes the perfect tool.*



13. Layer the *lid* circle over the batting & backing. Baste $\frac{1}{4}$ " from edge. Trim excess batting & backing.



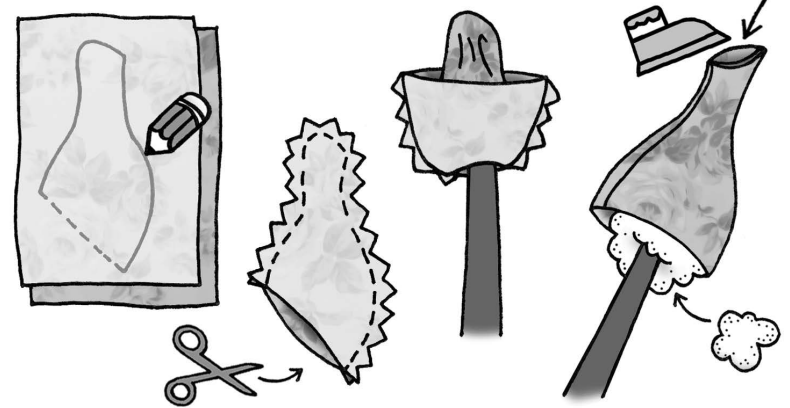
Assemble

10. Position & pin base, handle and spout onto the teapot making sure it is balanced. Attach base & spout securely using a *ladder stitch*.

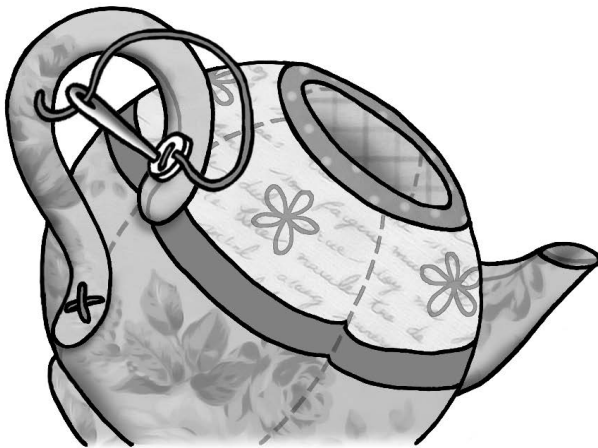


Spout

4. With right sides together, trace the *spout* template on the 5 x 9" rectangles. Sew along the solid lines. Trim by cutting notches along curves & cut on directly on dashed line. Turn right side out, push end in & press. Stuff with polyester stuffing.

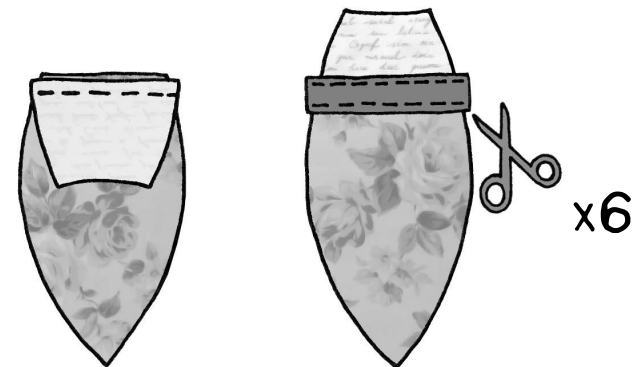


11. Using floss, attach the bottom of the handle with a large 'X' and sew through the button, handle & teapot body to attach the top of the handle.

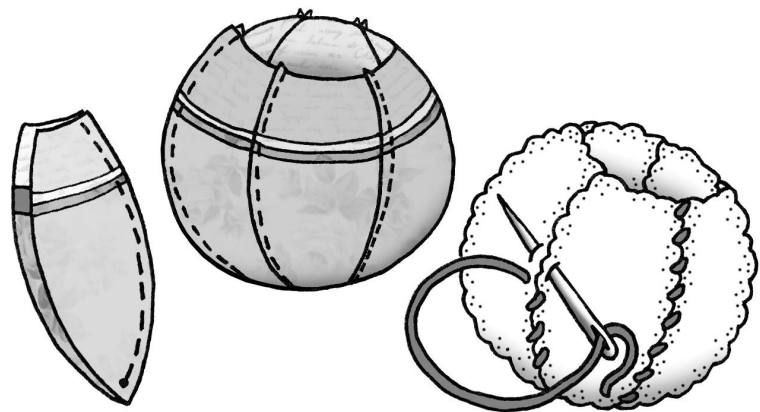


Teapot Body

5. With right sides together, join teapot bottom & teapot top. Press seams open. Centre ribbon over seam and topstitch in place. Trim ribbon. Repeat for all 6 sides.



6. With right sides together, pin two sides together aligning the ribbon. Sew from the top to the dot marked on the templates. Join pairs together to form a ball shape. Repeat with lining. *Whipstitch* the batting together. *TIP: Press seams open with a mini iron to reduce bulk and create a smooth seam.*

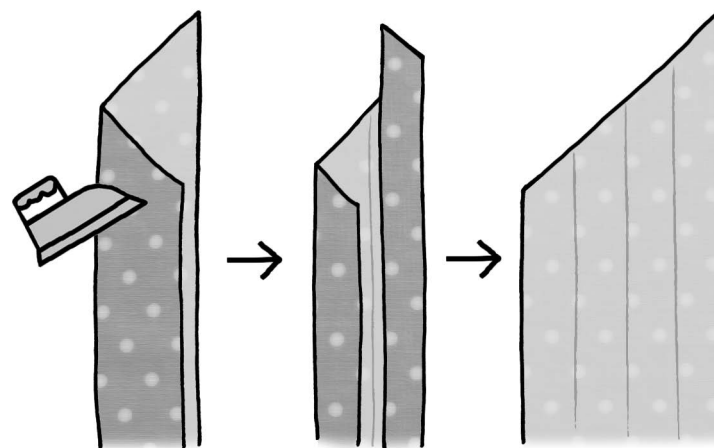


7. Sandwich the layers aligning all seams. Starting at the bottom of the teapot, quilt along the seams using a *running stitch* and 6 strands of floss matching up the seams on both sides. Embroider a lazy daisy in each section above the ribbon. Trim excess batting & lining. *TIP: Baste the layers using safety pins.*

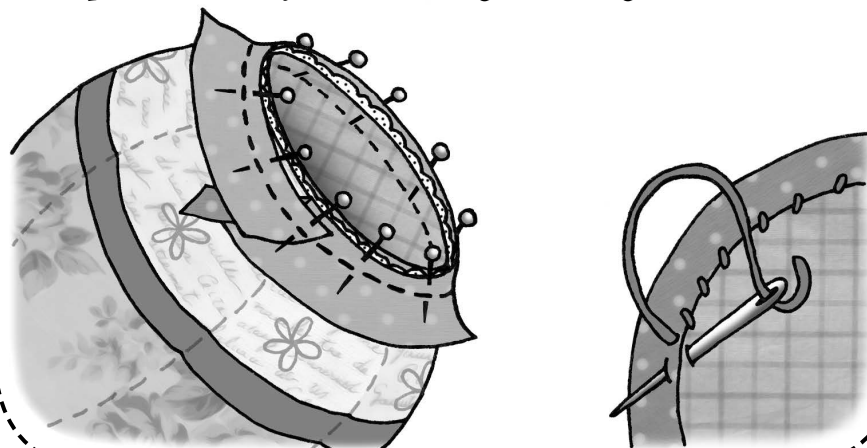


Binding

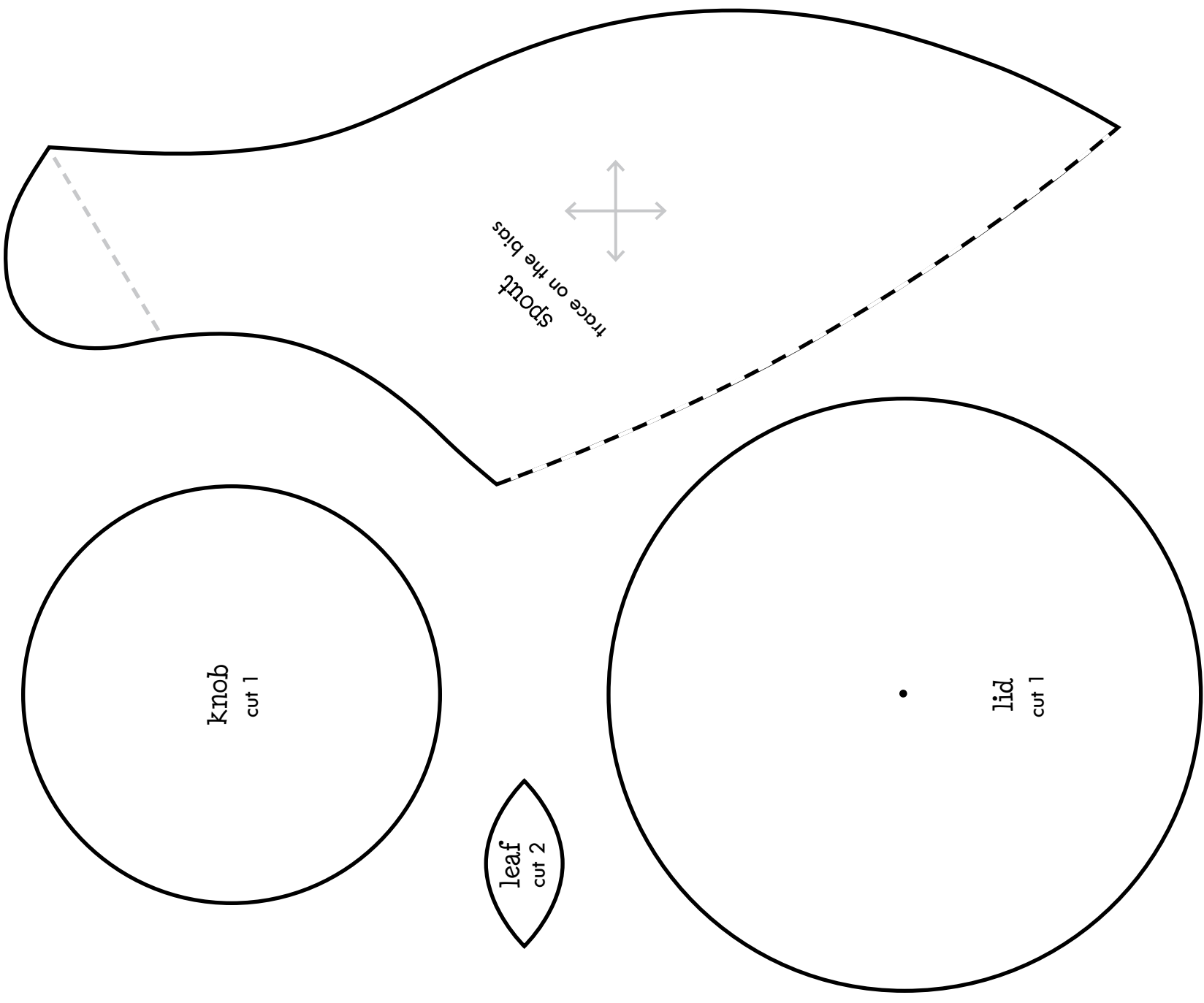
8. Press each binding strip in half lengthwise. Unfold and press edges to the centre crease. Unfold.



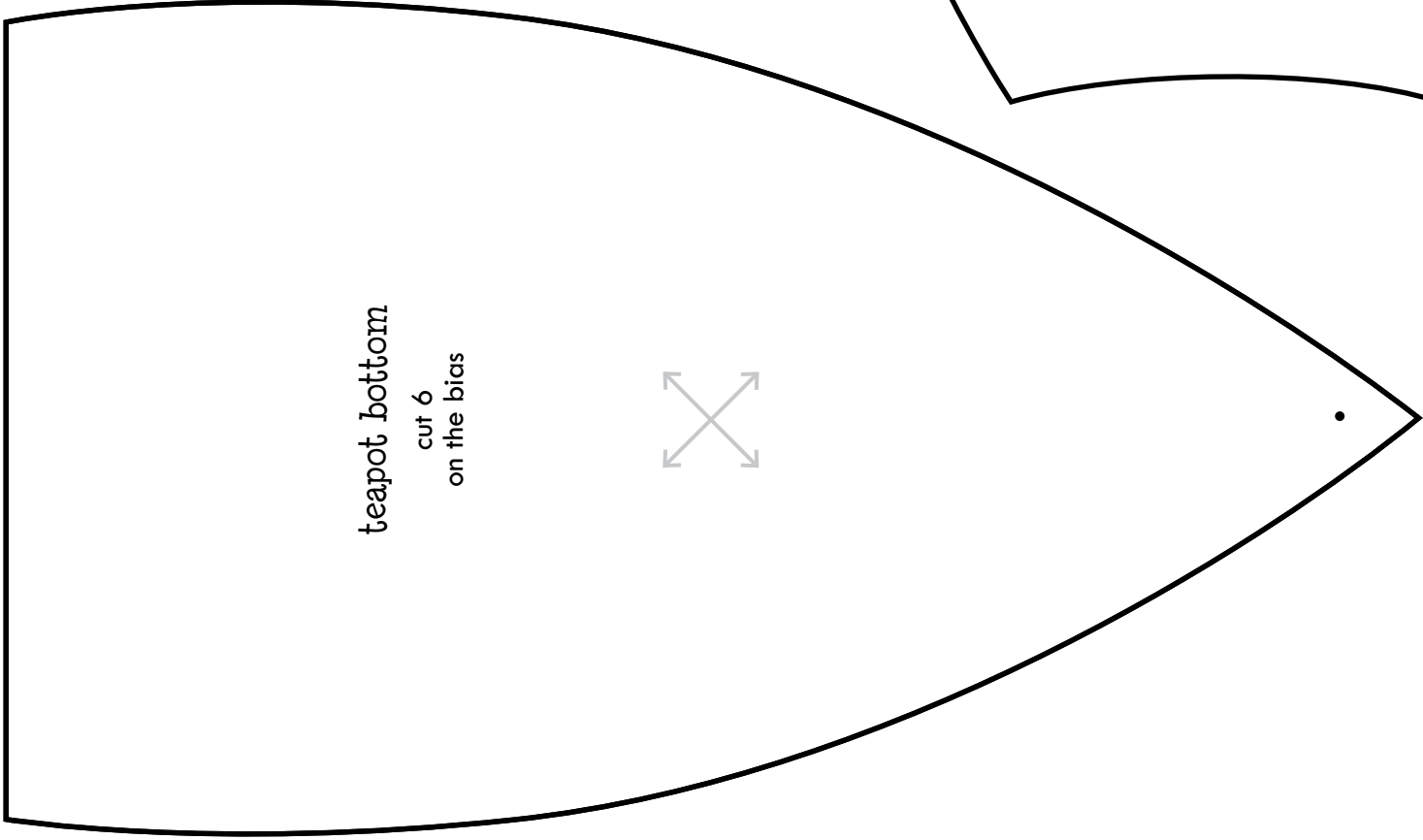
9. Fold the bias strip $\frac{1}{4}$ " in at the start and with right sides together, pin along the outer edge of the teapot. Sew through all layers using $\frac{3}{8}$ " seam allowance. Re-fold the binding and hand-sew to the opposite side using a blindstitch. *TIP: Flip the teapot inside out before hand-sewing the binding.*



QUILTED TEAPOT

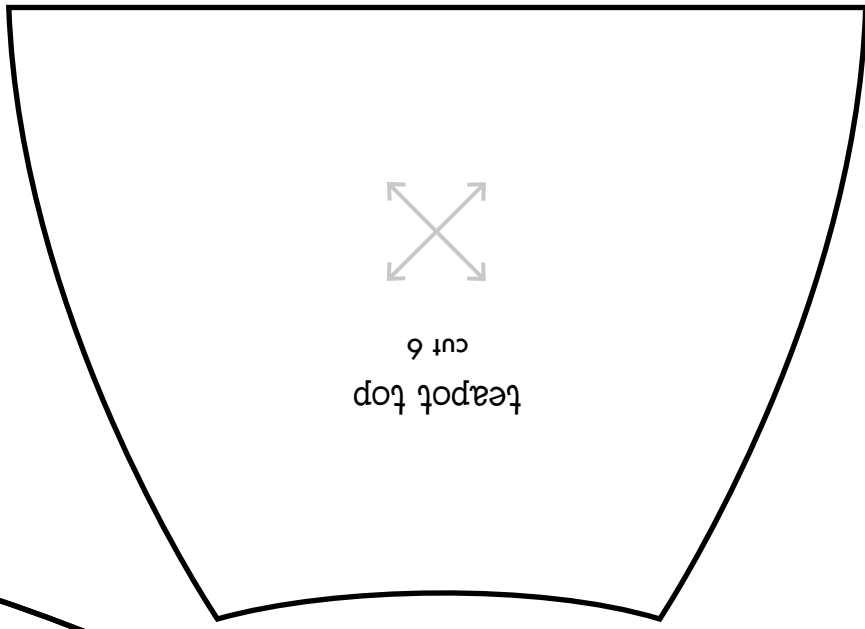


QUILTED TEAPOT



teapot bottom

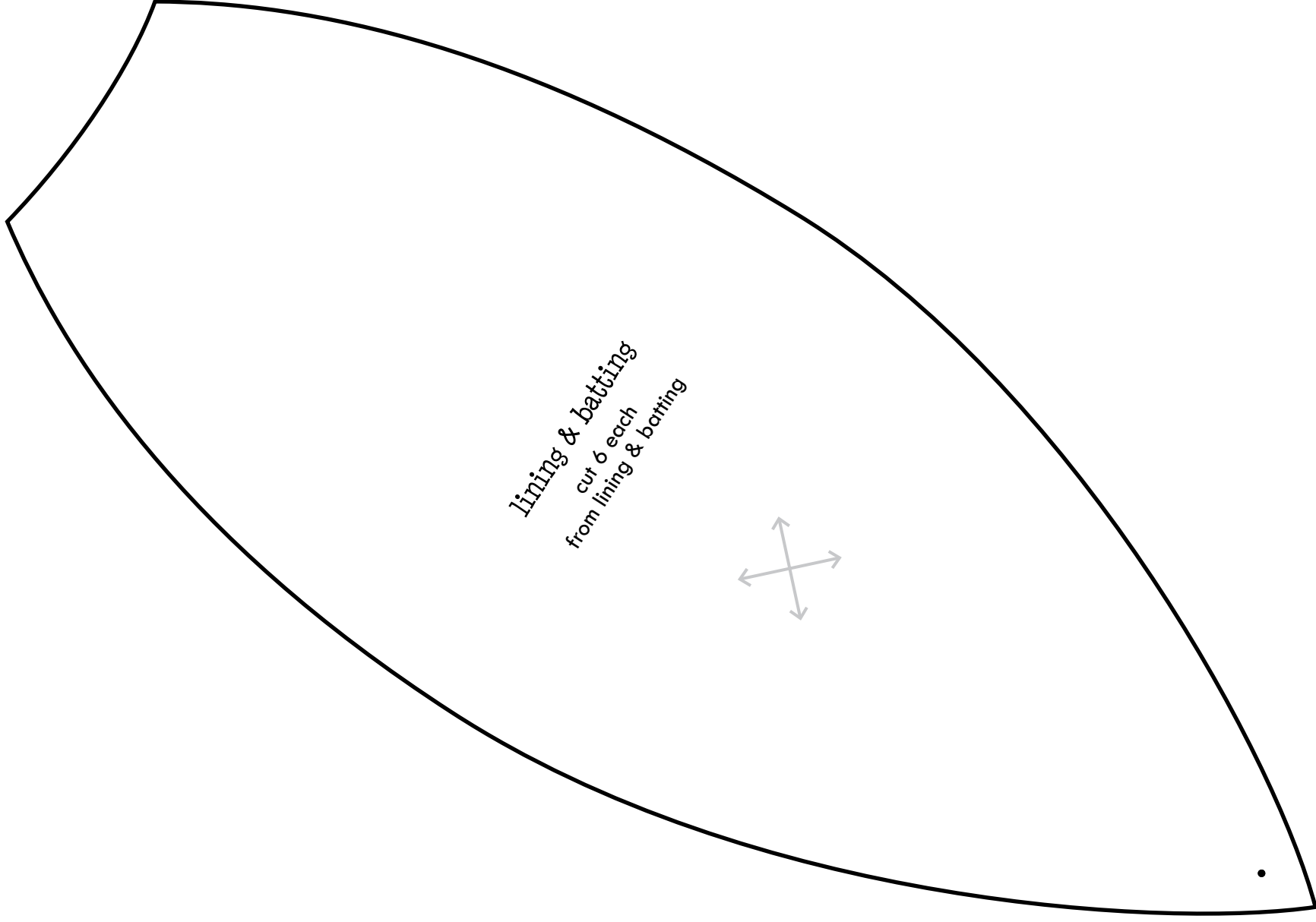
cut 6
on the bias



teapot top
cut 6



QUILTED TEAPOT



BOOKLET ASSEMBLY

In your printer settings, set page scaling to "none".

Method #1 (best results)

Print the cover on high quality professional matte photo 8½ x 11" paper using a borderless setting.

Print PDF pages 1, 3 & 5. Flip over the stack of printed pages and return them to the printer. Print PDF pages 2, 4 & 6. Arrange pages in order. Fold in half and tie pages together with a couple stitches at the fold to create a booklet. Print templates on separate pages.

The following steps should be printed on opposite sides of the same paper:

cover <---> stitches & terms
14, 15, cutting & 1 <---> 2, 3, 12 & 13
10, 11, 4 & 5 <---> 6-9

Method #2

Print all pages. Match up pages in above chart with wrong sides together. Arrange the pairs in order. With the cover on the outside, fold in half and tie pages together with a couple stitches at the fold.

*Please remember that this pattern is for your personal use only. It is against the law to share this pattern with friends or post it on the internet. Please respect the copyright.

PATCHWORK*POTTERY

quilted craft patterns by Laurraine Yuyama