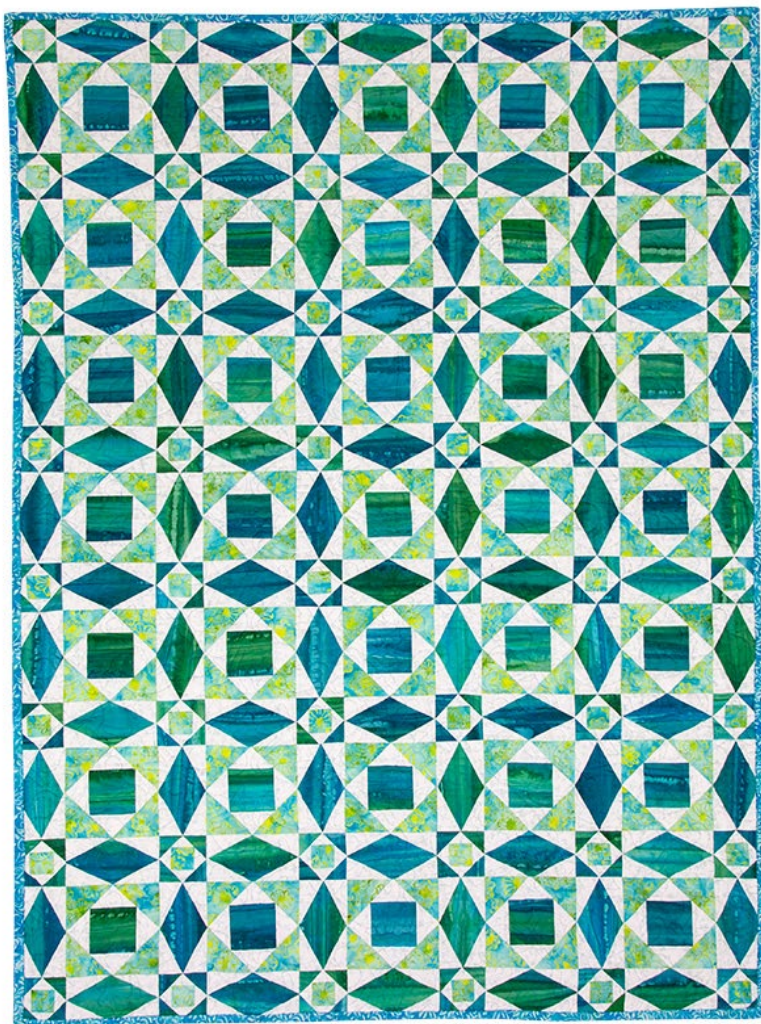


GO! Classic Storm at Sea Throw Quilt

Finished Size: 48" x 66"





Dies Needed:

GO! Storm at Sea (55221)

Additional Dies (optional)

GO! Strip Cutter-2-1/2" (2" Finished) (55017 or 55014)

Fabric Requirements:

| Fabric Color | Total Yardage |
|--------------|---------------|
| Dark | 3 yards |
| Medium | 1 1/4 yards |
| Light | 3 1/8 yards |
| Binding | 1/2 yard |
| Backing | 3 1/2 yards |

Cutting Directions: Cut fabric in the order listed below.

| Fabric Color | Die | Number of Shapes to Cut |
|--------------|--------------------------|---|
| Dark | GO! Storm at Sea (55221) | Cut 4—14" WOF strips. Fanfold into 4" widths. Place on selected shapes and sub cut a total of (44) Shape A, (88) Shape E, and (35) Shape F. |
| Dark | GO! Storm at Sea (55221) | Cut 4—9-3/4" WOF strips. Fanfold into 4" widths. Place on selected shapes and sub cut a total of (38) Shape A, and (88) Shape E. |
| Dark | GO! Storm at Sea (55221) | Cut 1—3" x WOF Strip. Fanfold into 3" widths. Place on Shape E and sub cut into 16 HST shapes. |
| Medium | GO! Storm at Sea (55221) | Cut 3—6-1/2" x WOF Strips. Fanfold into 4-1/2" widths. Place on selected shapes and sub cut a total of (48) Shape C, and (54) Shape H. |
| Medium | GO! Storm at Sea (55221) | Cut 5—4-1/2" x WOF Strips. Fanfold into 4-1/2" widths. Place on Shape H and sub cut into (86) HST shapes. |
| Light | GO! Storm at Sea (55221) | Cut 10—8-1/2" x WOF Strip. Fanfold into 3" widths. Place on selected shapes and sub cut a total of (280) Shape B, (140) Shape G, and (140) Shape D. |
| Light | GO! Storm at Sea (55221) | Cut 2—4-1/2" x WOF Strips. Fanfold into 3" widths. Place on selected shapes and sub cut a total of (48) Shape B. |
| Light | GO! Storm at Sea (55221) | Cut 3—2-1/2" x WOF Strips. Fanfold into 2" widths. Place on Shape D and sub cut into (52) QST shapes. |

Sewing Directions:

Press all seams open and use 1/4" seams, unless otherwise indicated.

Follow the assembly instructions on Page 5 to sew the GO! Storm at Sea Block.

1. Sew shape F, G, AND H as you see in Step 1 and 2 on pg. 5. Make 35 of these units. Press these seams towards the outside as you go.
2. Sew the C, D, AND E units as shown in Steps 3 & 4, pressing the seams towards the outside. Make 48 of these units.
3. Sew A & B units as pictured in step 5. Press all seams to the outside. Make 82 of these units.
4. Sew (1) A/B unit to the left side of a F/G/H unit as shown in step 6. Make a total of 35 of these units. Press the seam towards your A/B diamond unit.
5. Sew (1) C/D/E to the left side of a A/B unit as seen in step 7 and press the seams toward the A/B diamond unit. Make 47 of the units. You will have (1) C/D/E unit left. This will be used in the bottom row of the quilt.
6. Sew the 2 units together as shown in step 8, to make a 9" finished Storm at Sea Block. Note that you will have 12 A/B units left. These will be used along the side and bottom of the quilt to complete the design
7. Sew (5) Storm at Sea Blocks together, and (1) vertical C/D/E and A/B units on the end to create a row. Create (7) rows.
8. Sew (5) horizontal C/D/E and A/B units and (1) C/D/E unit together to create the bottom border.
9. Sew the (7) rows and bottom border to create the quilt top. Press rows in opposite directions so seams nest.

GO!

Product SKU Sheet

SKU55221
Effective August 2019

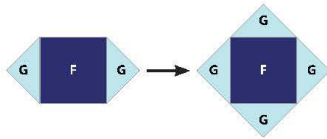


GO!® Storm at Sea-9" Finished

Item Number: 55221

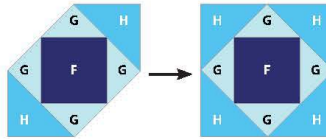
How to Sew the 3-color, 9" finished Storm at Sea Block with Single Sashing:

Step 1



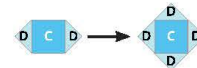
Sew piece G to each side of piece F on opposite sides as shown.

Step 2



Sew piece H to each side of F/G on opposite sides as shown. Make one F/G/H unit.

Step 3



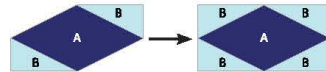
Sew piece D to each side of piece C on opposite sides as shown.

Step 4



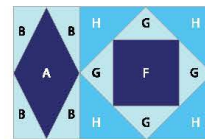
Sew piece E to each side of C/D on opposite sides as shown.

Step 5



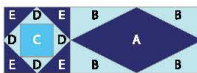
Sew piece B to each side of piece A on opposite sides as shown. Make two A/B units.

Step 6



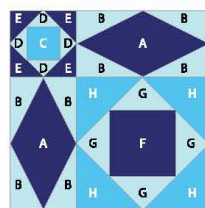
Sew vertical A/B unit on left side of F/G/H center unit.

Step 7



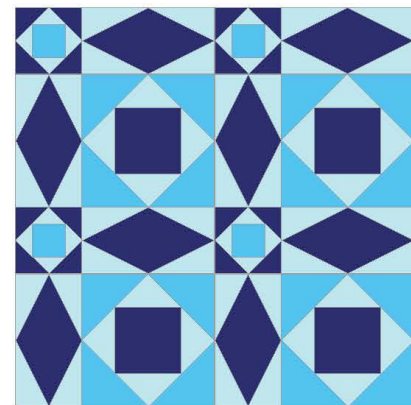
Sew C/D/E unit on left side of a horizontal A/B unit.

Step 8



Sew the horizontal C/D/E/A/B unit to the top of the A/B/F/G/H unit to complete the repeating block.

Step 9



Sew blocks together to create Storm at Sea blocks with single sashing.

@accuquilt

For more information, call 888.258.7913

©2019 AccuQuilt



Quilting and Finishing

1. Layer batting between quilt top and backing.
2. Pin or baste layers together.
3. Quilt as desired.
4. Add binding, mitering corners.