



Golden Plait Runner

Fusible appliqué - Marilyn Hornby

This stylish runner is the first in a series of past projects that we are revisiting and giving a fresh new look to in celebration of 30 years of P&Q.

REQUIREMENTS



Size: 11" x 62"

- 50cm each Dark, Medium, Light Medium and Light Rust
- 50cm Cream
- 1m Gold – bias strips and binding
- ¾m Backing
- 1½m Fusible web e.g. Bondaweb
- 13" x 65" Low loft, heatproof wadding e.g. Thermolam
- Invisible thread
- 2 Tassels – optional
- ¼" Bias binding bar
- Tracing paper

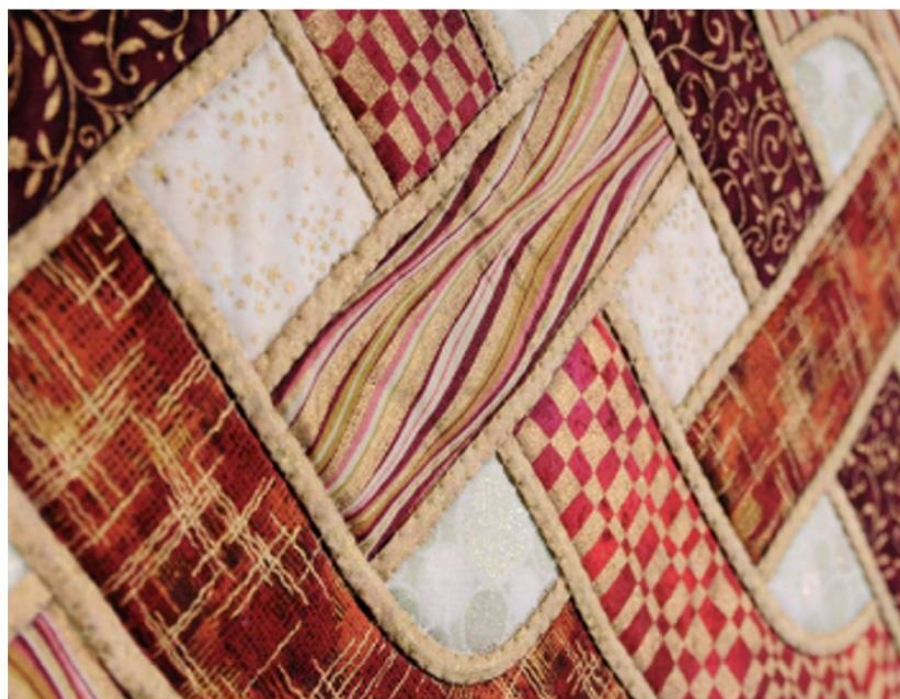
Many thanks to Eckington Manor in
Worcestershire for use of the lovely premises
for photography of this quilt.

For further details of their accommodation visit
www.eckingtonmanor.co.uk





Flat shot



Stitching detail

tip: Cover pieces with baking parchment or appliqué pressing sheet to protect surface of iron.

8. Continue adding appliqué pieces until all have been fused to wadding.

Bias strips

- 1a.** Take gold fabric and cut 1" strips along the bias.
- b.** Fold strips in half lengthwise and stitch seam $\frac{1}{4}$ " from folded edge.
- c.** Trim raw edges close to line of stitching leaving seam allowance of scant $\frac{1}{8}$ ".
- 2a.** Insert bias bar into strip and twist seam so it lies on centre of one flat side.
- b.** Press bias strip flat, easing it off bias bar as you press.

c. Ensure seam is centred throughout and take care as bar may get hot.

3a. Take one bias strip and place it at one end of runner, ensuring strip covers raw edges of appliqué pieces underneath.

b. Tack in position.

tip: It is important to ensure raw edges at ends of each strip are covered by a subsequent strip crossing over it.

c. Take time to work out order in which to add strips so that no ends are showing. Note it may be necessary to stitch part of a strip first and then continue after another strip has been added.

d. Continue tacking strips in position.

e. Note outer edges are covered by binding in usual way once runner has been quilted.

Completion

1a. Take 13" backing strips and join strips end to end.

b. Trim joined strips so they measure 65" long.

2a. Make quilt sandwich with fused appliqué wadding and backing.

b. Pin or baste layers.

3a. Appliqué edges of bias strips using blind hemming stitch and invisible thread.

b. If wished, zigzag stitch edges instead.

4. Remove tacking stitches in bias strips once they have all been stitched down.

5a. Stitch through all layers just inside seam allowance around outer edge of runner.

b. Trim excess backing and wadding.

6a. Cut $\frac{1}{4}$ " strips from gold on the bias.

b. Join strips end to end and ensure length is sufficient to go all around outer edge of runner.

7a. Double bind edges easing binding around curved edges.

b. Pleat binding at inner corners, taking care not to stretch bias.

8. Add tassels to each end before stitching binding down at these points.

Enjoy!

Contact

Marilyn has written projects for P&Q for many years. Contact her at admin@patchfloradesigns.co.uk or visit her websites www.patchfloradesigns.co.uk and www.patchflora.co.uk

We hope you have enjoyed revisiting this project as part of our 30th anniversary celebrations. We love to know which have been your favourite projects over the years. Email us at pq@trapelet.com or write to us at the usual address.